

**GENERAL NOTES:**

1. ALL TRAFFIC LINES AND PAVEMENT MARKINGS SHALL BE INSTALLED WITH THERMOPLASTIC BY THE CONTRACTOR, UNLESS OTHERWISE NOTED.
2. ALL TRAFFIC LINES AND PAVEMENT MARKINGS SHALL CONFORM TO CALTRANS STANDARD PLANS AND SPECIFICATIONS (2010 EDITION).
3. ALL CONFLICTING LINES AND MARKINGS SHALL BE REMOVED BY WET SANDBLASTING OR GRINDING (THEN PAINTED BLACK) AND INCLUDES REMOVAL OF RAISED PAVEMENT MARKERS.
4. ALL TURN ARROW MARKINGS SHALL BE TYPE IV (L OR R) UNLESS OTHERWISE NOTED.
5. ALL LANE STRIPING AT INTERSECTION APPROACHES WITHOUT CROSSWALKS OR LIMIT LINES SHALL END 10 FEET FROM THE EXTENSION OF THE INTERSECTING CURB LINE.
6. ALL LANE LINES AT INTERSECTION APPROACHES AND DEPARTURES SHALL BEGIN AND END WITH 50 FEET OF 4-INCH SOLID WHITE LINE, UNLESS OTHERWISE NOTED.
7. LANE WIDTHS SHALL BE MEASURED BETWEEN THE CENTERLINES OF EACH ADJACENT SINGLE OR DOUBLE STRIPE OR TOP OF CURB AS APPROPRIATE.
8. PROPOSED LIMIT LINE SHOULD BE INSTALLED AT A MINIMUM OF 4 FEET BEHIND THE CURB EXTENSION OR EDGE OF TRAVEL WAY, IN THE CASE OF AN INTERSECTION WITH A CURB ACCESS RAMP, THE LIMIT LINE SHALL BE PLACED BEHIND THE RAMP'S LANDING AREA, BUT IN NO CASE GREATER THAN 30 FEET BACK.
9. ALL NEW SIGNING SHALL CONFORM TO THE CALIFORNIA MANUAL OF UNIFORM TRAFFIC CONTROL DEVICES, 2012 EDITION.
10. ALL SIGNING SHOWN HEREON SHALL BE INSTALLED, RELOCATED, OR REMOVED BY THE COUNTY OF LOS ANGELES DEPARTMENT OF PUBLIC WORKS AT THE DEVELOPER'S EXPENSE, CALL (626) 458-1709 10 DAYS PRIOR FOR COORDINATION.
11. SEE TRAFFIC SIGNAL PLAN FOR LOCATION OF CROSSWALKS AT SIGNALIZED INTERSECTIONS.
12. FOR QUESTIONS RELATED TO THIS PLAN, CONSTRUCTION INSPECTORS SHOULD CONTACT KENT TSUIJI AT 626-300-4776.

**CONSTRUCTION NOTES:**

- 1 INSTALL DETAIL 9.
- 9 INSTALL DETAIL 39.
- 12 INSTALL 12" WHITE LIMIT LINE.
- 13 INSTALL 12" WHITE CROSSWALK.
- 14 INSTALL PAVEMENT MARKINGS AS SHOWN.
- 15 INSTALL DETAIL 26.
- 17 INSTALL TEMPORARY RAILING, TYPE K, PER CALTRANS STD. PLAN 134 AND 13B.
- 22 INSTALL 6" WHITE DIAGONAL LINES AT 20' SPACING.
- 23 INSTALL DETAIL 27.

**SIGN LEGEND:**

- \* - INDICATES SIGNS MOUNTED ON TRAFFIC SIGNAL POLE
- \*\* - INDICATES SIGNS MOUNTED ON TRAFFIC SIGNAL MAST ARM.

REVISIONS	BY	DATE	CAD FILE NAME	PROJECT

DOMAIN	GE, KT
DESIGNED BY	LT
DRAWN BY	TM
REVIEWED BY	TM

<p>REGISTERED PROFESSIONAL ENGINEER EDWARD MILLER, JR. No. 47615 CLAYTON STATE OF CALIFORNIA</p>	<p>REGISTERED PROFESSIONAL ENGINEER EDWARD MILLER, JR. No. 2084 TRAFFIC CALIFORNIA STATE OF CALIFORNIA</p>	<p>PREPARED BY: ADVANTEC Consulting Engineers Traffic + ITS + Communications + Civil + Electrical 21700 Coley Drive, Suite 350 Diamond Bar, CA 91765 Tel: (909) 860-6222 Fax: (909) 860-6722 www.advantec-usa.com</p>	<p>REVIEWED: COUNTY OF LOS ANGELES</p>
			<p>DATE: _____</p>
<p>RECOMMENDED: COUNTY OF LOS ANGELES</p>	<p>DATE: _____</p>	<p>APPROVED: GAIL FARBER, DIRECTOR OF PUBLIC WORKS</p>	<p>DATE: _____</p>
<p>DATE: 02/27/16</p>	<p>DATE: _____</p>	<p>DATE: _____</p>	<p>DATE: _____</p>

T.G. 4549-H1

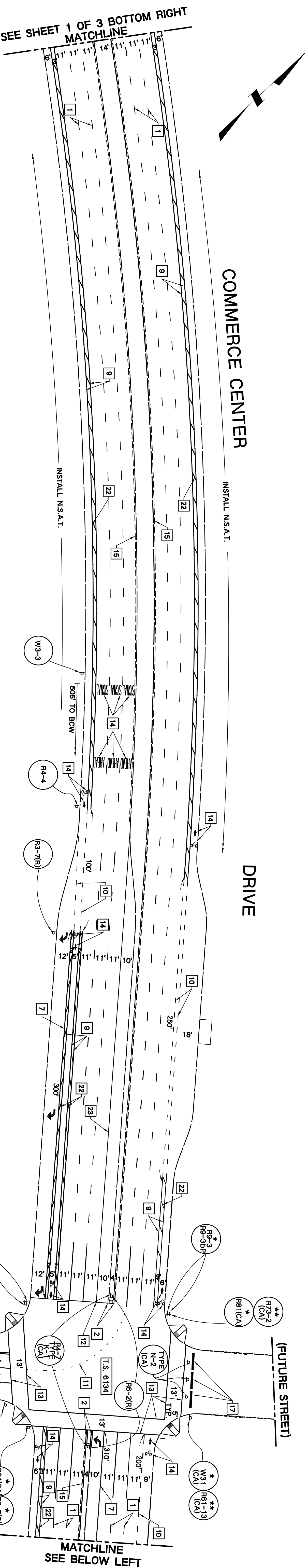
THIS PLAN EXPIRES TWO YEARS AFTER APPROVAL DATE

COUNTY OF LOS ANGELES  
DEPARTMENT OF PUBLIC WORKS  
TRAFFIC AND LIGHTING DIVISION

SIGNING AND STRIPING INTERIM PLAN  
COMMERCE CENTER DRIVE

750' W/O "GG" STREET TO MAGIC MOUNTAIN PKWY

TR 81105-01C | SH1 1 OF 3 | SCALE: 1"=40' | CD 3830



COMMERCE CENTER

DRIVE

COMMERCE CENTER

DRIVE

SEE SHEET 1 OF 3 BOTTOM RIGHT MATCHLINE

SEE ABOVE RIGHT MATCHLINE

SEE SHEET 3 OF 3 - TOP LEFT MATCHLINE

SEE GD 3837 - TR 61105-01D SHEE 2 OF 4 - BOTTOM RIGHT

SEE BELOW LEFT MATCHLINE

REVISIONS	BY	DATE	CAD FILE NAME	PROJECT

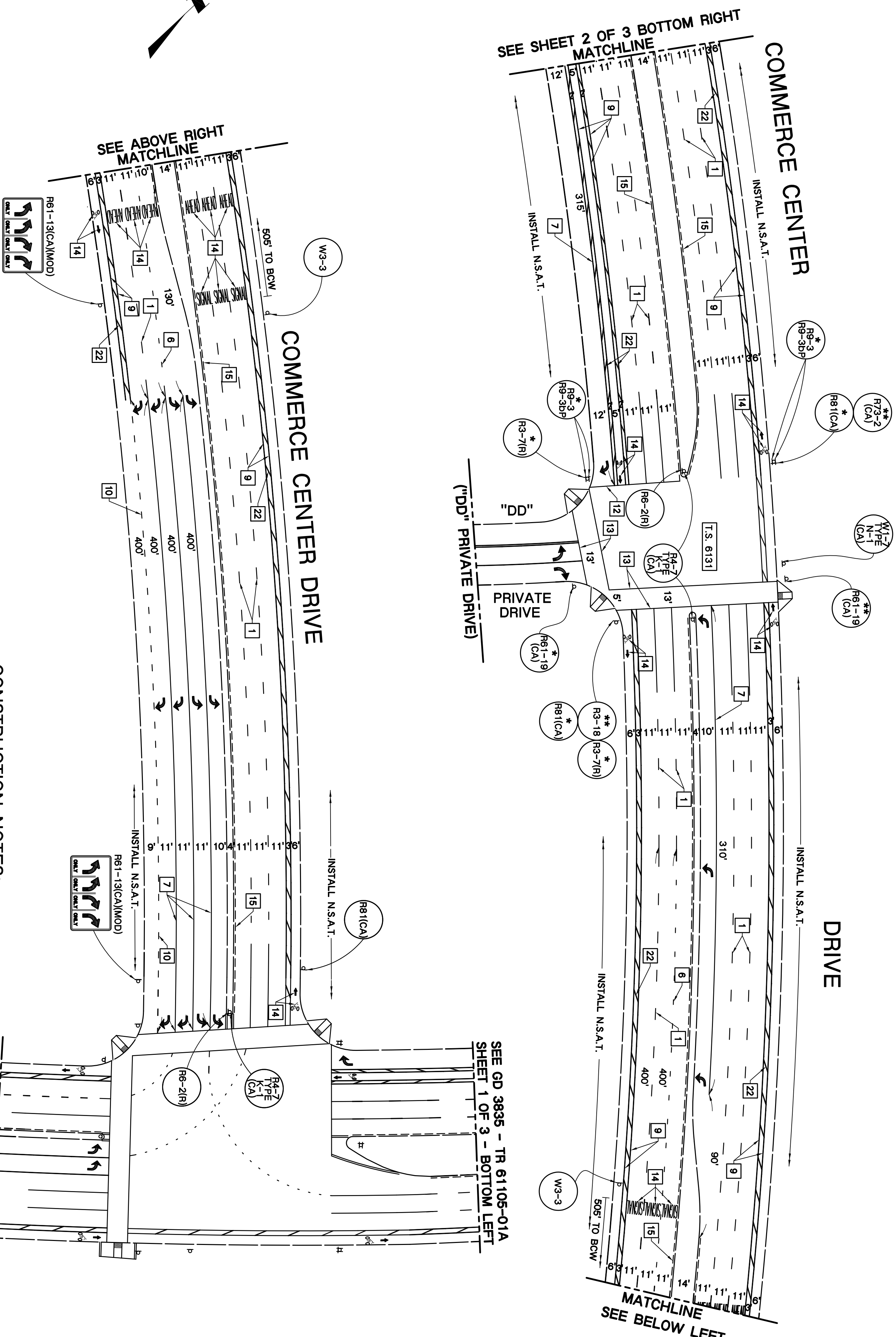
- GENERAL NOTES:**
1. ALL TRAFFIC LINES AND PAVEMENT MARKINGS SHALL BE INSTALLED WITH THERMOPLASTIC BY THE CONTRACTOR, UNLESS OTHERWISE NOTED.
  2. ALL TRAFFIC LINES AND PAVEMENT MARKINGS SHALL CONFORM TO CALTRANS STANDARD PLANS AND SPECIFICATIONS (2010 EDITION).
  3. ALL CONFLICTING LINES AND MARKINGS SHALL BE REMOVED BY WET SANDBLASTING OR GRINDING (THEN PAINTED BLACK) AND INCLUDES REMOVAL OF RAISED PAVEMENT MARKERS.
  4. ALL TURN ARROW MARKINGS SHALL BE TYPE IV (L OR R) UNLESS OTHERWISE NOTED.
  5. ALL LANE STRIPING AT INTERSECTION APPROACHES WITHOUT CROSSWALKS OR LIMIT LINES SHALL END 10 FEET FROM THE EXTENSION OF THE INTERSECTING CURB LINE.
  6. ALL LANE LINES AT INTERSECTION APPROACHES AND DEPARTURES SHALL BEGIN AND END WITH 50 FEET OF 4-INCH SOLID WHITE LINE, UNLESS OTHERWISE NOTED.
  7. LANE WIDTHS SHALL BE MEASURED BETWEEN THE CENTERLINES OF EACH ADJACENT SINGLE OR DOUBLE STRIPE OR TOP OF CURB AS APPROPRIATE.
  8. PROPOSED LIMIT LINE SHOULD BE INSTALLED AT A MINIMUM OF 4 FEET BEHIND THE CURB EXTENSION OR EDGE OF TRAVEL WAY, IN THE CASE OF AN INTERSECTION WITH A CURB ACCESS RAMP, THE LIMIT LINE SHALL BE PLACED BEHIND THE RAMP'S LANDING AREA, BUT IN NO CASE GREATER THAN 30 FEET BACK.
  9. ALL NEW SIGNING SHALL CONFORM TO THE CALIFORNIA MANUAL OF UNIFORM TRAFFIC CONTROL DEVICES, 2012 EDITION.
  10. ALL SIGNING SHOWN HEREON SHALL BE INSTALLED, RELOCATED, OR REMOVED BY THE COUNTY OF LOS ANGELES DEPARTMENT OF PUBLIC WORKS AT THE DEVELOPER'S EXPENSE. CALL (626) 458-1708 10 DAYS PRIOR FOR COORDINATION.
  11. SEE TRAFFIC SIGNAL PLAN FOR LOCATION OF CROSSWALKS AT SIGNALIZED INTERSECTIONS.
  12. FOR QUESTIONS RELATED TO THIS PLAN, CONSTRUCTION INSPECTORS SHOULD CONTACT KENT TSUJII AT 626-300-4776.

- CONSTRUCTION NOTES:**
1. INSTALL DETAIL 9.
  2. INSTALL DETAIL 28.
  7. INSTALL DETAIL 38.
  9. INSTALL DETAIL 39.
  10. INSTALL DETAIL 39A.
  11. INSTALL DETAIL 40.
  12. INSTALL 12" WHITE LIMIT LINE.
  13. INSTALL 12" WHITE CROSSWALK.
  14. INSTALL PAVEMENT MARKINGS AS SHOWN.
  15. INSTALL DETAIL 28.
  17. INSTALL TEMPORARY RAILING, TYPE K, PER CALTRANS STD. PLAN T3A AND T3B.
  22. INSTALL 6" WHITE DIAGONAL LINES AT 20' SPACING.

- SIGN LEGEND:**
- \* - INDICATES SIGN(S) MOUNTED ON TRAFFIC SIGNAL POLE.
  - \*\* - INDICATES SIGN(S) MOUNTED ON TRAFFIC SIGNAL MAST ARM.

	PREPARED BY: <b>ADVANTEC Consulting Engineers</b> Traffic + ITS + Communications + Civil + Electrical 21700 Coleley Drive, Suite 350 Diamond Bar, CA 91765 Tel: (909) 860-6222 Fax: (909) 860-6722 www.advantec-usa.com	REVIEWED: COUNTY OF LOS ANGELES BY: _____ DATE _____ RECOMMENDED: COUNTY OF LOS ANGELES BY: _____ DATE _____ APPROVED: GAIL FABBER, DIRECTOR OF PUBLIC WORKS BY: _____ DATE _____ ASSISTANT DEPUTY DIRECTOR
	SIGNING AND STRIPING INTERIM PLAN <b>COMMERCE CENTER DRIVE</b> <b>750' W/O '69" STREET TO MAGIC MOUNTAIN PKWY</b> TR 61105-01C SHIT 2 OF 3 SCALE: 1"=40' CD 3830	COUNTY OF LOS ANGELES DEPARTMENT OF PUBLIC WORKS TRAFFIC AND LIGHTING DIVISION

T.G. 4549-J2



**CONSTRUCTION NOTES:**

- 1 INSTALL DETAIL 9.
- 6 INSTALL DETAIL 37B.
- 7 INSTALL DETAIL 38.
- 9 INSTALL DETAIL 39.
- 10 INSTALL DETAIL 39A.
- 12 INSTALL 12" WHITE LIMIT LINE.
- 13 INSTALL 12" WHITE CROSSWALK.
- 14 INSTALL PAVEMENT MARKINGS AS SHOWN.
- 15 INSTALL DETAIL 26.
- 22 INSTALL 6" WHITE DIAGONAL LINES AT 20' SPACING.

**SIGN LEGEND:**

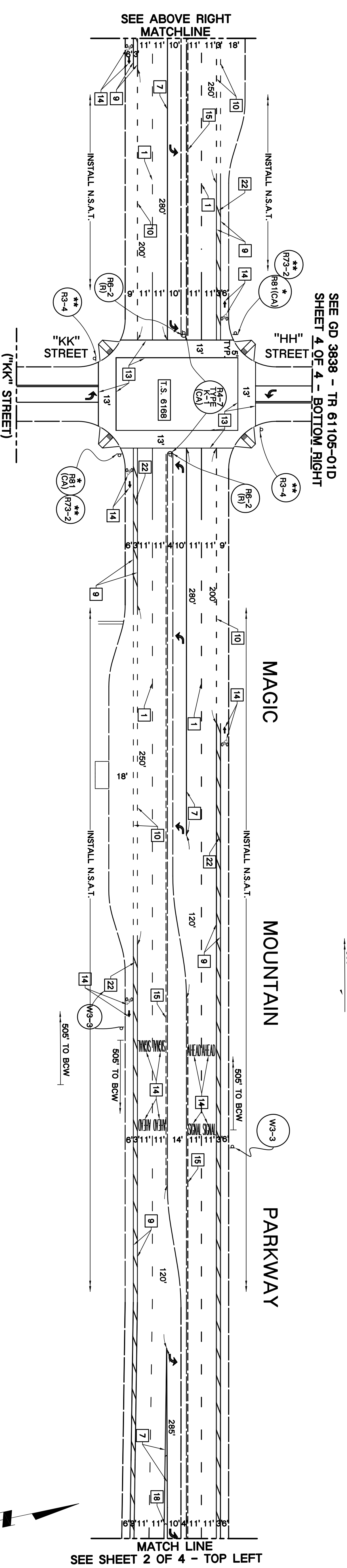
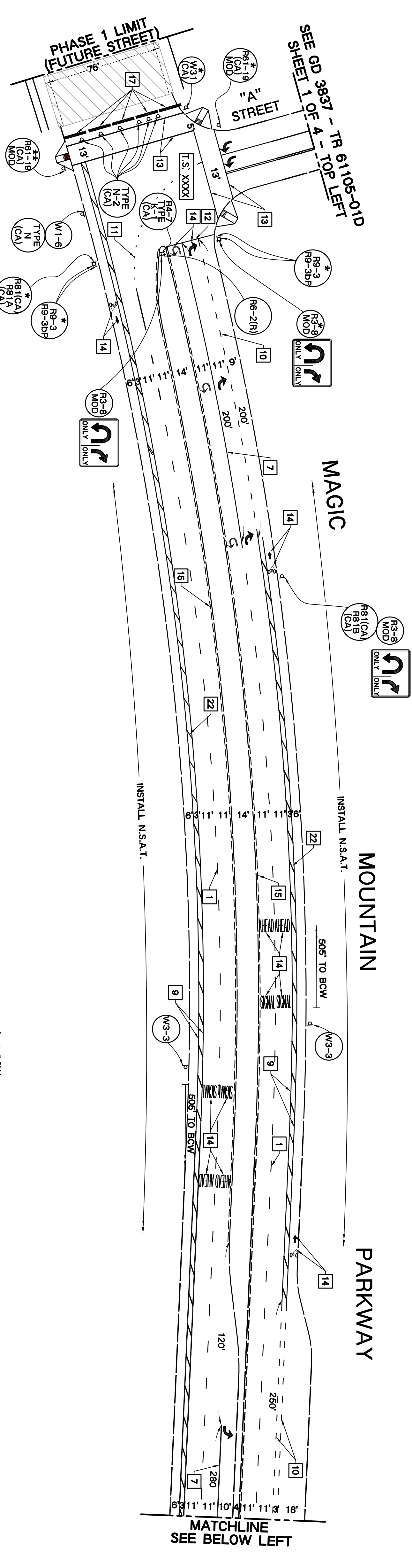
- \* - INDICATES SIGN(S) MOUNTED ON TRAFFIC SIGNAL POLE.
- \*\* - INDICATES SIGN(S) MOUNTED ON TRAFFIC SIGNAL MAST ARM.

**GENERAL NOTES:**

1. ALL TRAFFIC LINES AND PAVEMENT MARKINGS SHALL BE INSTALLED WITH THERMOPLASTIC BY THE CONTRACTOR, UNLESS OTHERWISE NOTED.
2. ALL TRAFFIC LINES AND PAVEMENT MARKINGS SHALL CONFORM TO CALTRANS STANDARD PLANS AND SPECIFICATIONS (2010 EDITION).
3. ALL CONFLICTING LINES AND MARKINGS SHALL BE REMOVED BY WET SANDBLASTING OR GRINDING (THEN PAINTED BLACK) AND INCLUDES REMOVAL OF RAISED PAVEMENT MARKERS.
4. ALL TURN ARROW MARKINGS SHALL BE TYPE IV (L OR R) UNLESS OTHERWISE NOTED.
5. ALL LANE STRIPING AT INTERSECTION APPROACHES WITHOUT CROSSWALKS OR LIMIT LINES SHALL END 10 FEET FROM THE EXTENSION OF THE INTERSECTING CURB LINE.
6. ALL LANE LINES AT INTERSECTION APPROACHES AND DEPARTURES SHALL BEGIN AND END WITH 50 FEET OF 4-INCH SOLID WHITE LINE, UNLESS OTHERWISE NOTED.
7. LANE WIDTHS SHALL BE MEASURED BETWEEN THE CENTERLINES OF EACH ADJACENT SINGLE OR DOUBLE STRIPE OR TOP OF CURB AS APPROPRIATE.
8. PROPOSED LIMIT LINE SHOULD BE INSTALLED AT A MINIMUM OF 4 FEET BEHIND THE CURB EXTENSION OR EDGE OF TRAVEL WAY, IN THE CASE OF AN INTERSECTION WITH A CURB ACCESS RAMP, THE LIMIT LINE SHALL BE PLACED BEHIND THE RAMP'S LANDING AREA, BUT IN NO CASE GREATER THAN 50 FEET BACK.
9. ALL NEW SIGNING SHALL CONFORM TO THE CALIFORNIA MANUAL OF UNIFORM TRAFFIC CONTROL DEVICES, 2012 EDITION.
10. ALL SIGNING SHOWN HEREON SHALL BE INSTALLED, RELOCATED, OR REMOVED BY THE COUNTY OF LOS ANGELES DEPARTMENT OF PUBLIC WORKS AT THE DEVELOPERS EXPENSE. CALL (626) 458-1708 10 DAYS PRIOR FOR COORDINATION.
11. SEE TRAFFIC SIGNAL PLAN FOR LOCATION OF CROSSWALKS AT SIGNALIZED INTERSECTIONS.
12. FOR QUESTIONS RELATED TO THIS PLAN, CONSTRUCTION INSPECTORS SHOULD CONTACT KENT TSUIII AT 626-300-4776.

REVISIONS	BY	DATE	CAD FILE NAME	PROJECT

<p><b>ADVANTTEC Consulting Engineers</b> Traffic + ITS + Communications + Civil + Electrical</p> <p>21700 Coley Drive, Suite 350 Diamond Bar, CA 91765</p> <p>Tel: (909) 860-6222 Fax: (909) 860-6722 www.advanttec-usa.com</p>		
<p>PREPARED BY: _____ DATE: 02/27/15</p>	<p>REVIEWED: _____ DATE: _____</p> <p>RECOMMENDED: _____ DATE: _____</p> <p>APPROVED: GAIL FARNER, DIRECTOR OF PUBLIC WORKS DATE: _____</p> <p>BY: _____ DATE: _____</p> <p>ASSISTANT DEPUTY DIRECTOR</p>	<p>COUNTY OF LOS ANGELES DEPARTMENT OF PUBLIC WORKS TRAFFIC AND LIGHTING DIVISION</p> <p>SIGNING AND STRIPING PLAN <b>COMMERCE CENTER DRIVE</b> 750' W/O '69" STREET TO MAGIC MOUNTAIN PKWY</p> <p>TR81105-01C   SHT. 3 OF 3   SCALE: 1" = 40'</p>



NO.	DATE	BY	REVISIONS

**GENERAL NOTES:**

1. ALL TRAFFIC LINES AND PAVEMENT MARKINGS SHALL BE INSTALLED WITH THERMOPLASTIC BY THE CONTRACTOR, UNLESS OTHERWISE NOTED.
2. ALL TRAFFIC LINES AND PAVEMENT MARKINGS SHALL CONFORM TO CALTRANS STANDARD PLANS AND SPECIFICATIONS (2010 EDITION).
3. ALL CONFLICTING LINES AND MARKINGS SHALL BE REMOVED BY WET SANDBLASTING OR GRINDING (THEN PAINTED BLACK) AND INCLUDES REMOVAL OF RAISED PAVEMENT MARKERS.
4. ALL TURN ARROW MARKINGS SHALL BE TYPE IV (L OR R) UNLESS OTHERWISE NOTED.
5. ALL LANE STRIPING AT INTERSECTION APPROACHES WITHOUT CROSSWALKS OR LIMIT LINES SHALL END 10 FEET FROM THE EXTENSION OF THE INTERSECTING CURB LINE.
6. ALL LANE LINES AT INTERSECTION APPROACHES AND DEPARTURES SHALL BEGIN AND END WITH 50 FEET OF 4-INCH SOLID WHITE LINE, UNLESS OTHERWISE NOTED.
7. LANE WIDTHS SHALL BE MEASURED BETWEEN THE CENTERLINES OF EACH ADJACENT SINGLE OR DOUBLE STRIPE OR TOP OF CURB AS APPROPRIATE.
8. PROPOSED LIMIT LINE SHOULD BE INSTALLED AT A MINIMUM OF 4 FEET BEHIND THE CURB EXTENSION OR EDGE OF TRAVEL WAY, IN THE CASE OF AN INTERSECTION WITH A CURB ACCESS RAMP; THE LIMIT LINE SHALL BE PLACED BEHIND THE RAMP'S LANDING AREA, BUT IN NO CASE GREATER THAN 30 FEET BACK.
9. ALL NEW SIGNING SHALL CONFORM TO THE CALIFORNIA MANUAL OF UNIFORM TRAFFIC CONTROL DEVICES, 2012 EDITION.
10. ALL SIGNING SHOWN HEREON SHALL BE INSTALLED, RELOCATED, OR REMOVED BY THE COUNTY OF LOS ANGELES DEPARTMENT OF PUBLIC WORKS AT THE DEVELOPER'S EXPENSE. CALL (828) 458-1708 10 DAYS PRIOR FOR COORDINATION.
11. SEE TRAFFIC SIGNAL PLAN FOR LOCATION OF CROSSWALKS AT SIGNALIZED INTERSECTIONS.
12. FOR QUESTIONS RELATED TO THIS PLAN, CONSTRUCTION INSPECTORS SHOULD CONTACT KENT TSUJII AT 828-300-4778.

**CONSTRUCTION NOTES:**

- 1 INSTALL DETAIL 9.
- 7 INSTALL DETAIL 38.
- 9 INSTALL DETAIL 39.
- 10 INSTALL DETAIL 39A.
- 11 INSTALL DETAIL 40.
- 12 INSTALL 12" WHITE LIMIT LINE.
- 13 INSTALL 12" WHITE CROSSWALK.
- 14 INSTALL PAVEMENT MARKINGS AS SHOWN.
- 15 INSTALL DETAIL 26.
- 16 INSTALL TEMPORARY RAILING, TYPE K, PER CALTRANS STD. PLAN 13A AND 13B.
- 17 INSTALL 12" WHITE CHEROONS AT 80' SPACING.
- 22 INSTALL 6" WHITE DIAGONAL LINES AT 20' SPACING.

**SIGN LEGEND:**

\* - INDICATES SIGNS MOUNTED ON TRAFFIC SIGNAL POLE.  
 \*\* - INDICATES SIGNS MOUNTED ON TRAFFIC SIGNAL MAST ARM.

PROJECT	CAD FILE NAME	DATE	BY

T.G. 4549-H3

REGISTERED PROFESSIONAL ENGINEER  
EDWARD MILLER, JR.  
No. 47615  
CIVIL  
CALIFORNIA

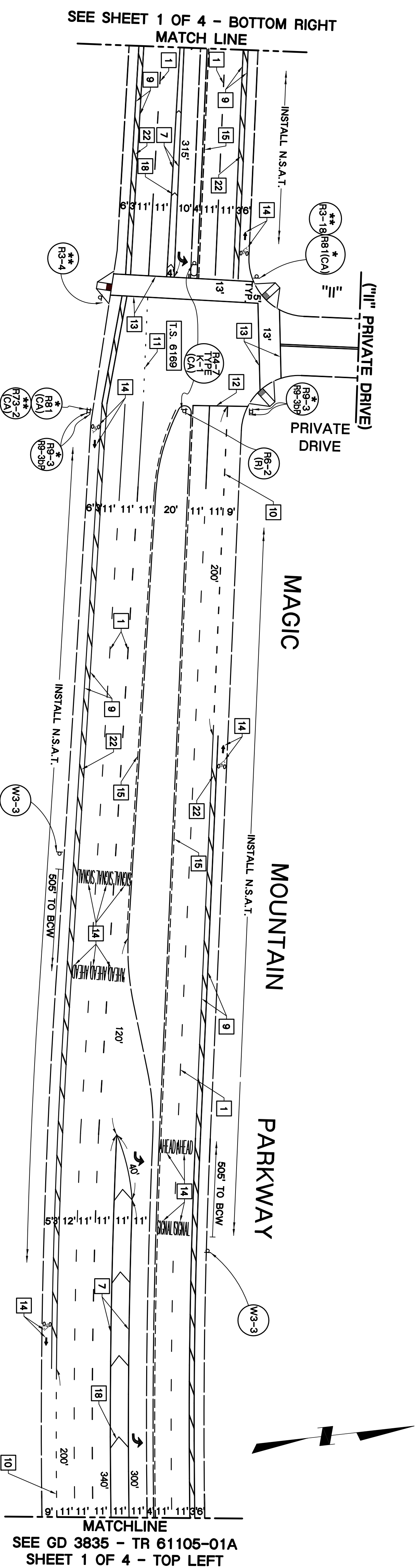
REGISTERED PROFESSIONAL ENGINEER  
EDWARD MILLER, JR.  
No. 2084  
TRAFFIC  
CALIFORNIA

PREPARED BY:  
ADVANTAGE Consulting Engineers  
Traffic + ITS + Communications + Civil + Electrical  
21700 Coley Drive,  
Suite 350  
Diamond Bar, CA 91765  
Tel: (909) 860-6222  
Fax: (909) 860-6722  
www.advantec-usa.com

COUNTY OF LOS ANGELES  
DEPARTMENT OF PUBLIC WORKS  
TRAFFIC AND LIGHTING DIVISION

SIGNING AND STRIPING INTERIM PLAN  
MAGIC MOUNTAIN PARKWAY  
"A" STREET TO THE OLD ROAD

THIS PLAN EXPIRES TWO YEARS AFTER APPROVAL DATE



**GENERAL NOTES:**

1. ALL TRAFFIC LINES AND PAVEMENT MARKINGS SHALL BE INSTALLED WITH THERMOPLASTIC BY THE CONTRACTOR, UNLESS OTHERWISE NOTED.
2. ALL TRAFFIC LINES AND PAVEMENT MARKINGS SHALL CONFORM TO CALTRANS STANDARD PLANS AND SPECIFICATIONS (2010 EDITION).
3. ALL CONNECTING LINES AND MARKINGS SHALL BE REMOVED BY WET SANDBLASTING OR GRINDING (THEN PAINTED BLACK) AND INCLUDES REMOVAL OF PAISED PAVEMENT MARKERS.
4. ALL TURN ARROW MARKINGS SHALL BE TYPE IV (L OR R) UNLESS OTHERWISE NOTED.
5. ALL LANE STRIPING AT INTERSECTION APPROACHES WITHOUT CROSSWALKS OR LIMIT LINES SHALL END 10 FEET FROM THE EXTENSION OF THE INTERSECTING CURB LINE.
6. ALL LANE LINES AT INTERSECTION APPROACHES AND DEPARTURES SHALL BEGIN AND END WITH 50 FEET OF 4-INCH SOLID WHITE LINE, UNLESS OTHERWISE NOTED.
7. LANE WIDTHS SHALL BE MEASURED BETWEEN THE CENTERLINES OF EACH ADJACENT SINGLE OR DOUBLE STRIPE OR TOP OF CURB AS APPROPRIATE.
8. PROPOSED LIMIT LINE SHOULD BE INSTALLED AT A MINIMUM OF 4 FEET BEHIND THE CURB EXTENSION OR EDGE OF TRAVEL WAY. IN THE CASE OF AN INTERSECTION WITH A CURB ACCESS RAMP, THE LIMIT LINE SHALL BE PLACED BEHIND THE RAMP'S LANDING AREA, BUT IN NO CASE GREATER THAN 30 FEET BACK.
9. ALL NEW SIGNING SHALL CONFORM TO THE CALIFORNIA MANUAL OF UNIFORM TRAFFIC CONTROL DEVICES, 2012 EDITION.
10. ALL SIGNING SHOWN HEREON SHALL BE INSTALLED, RELOCATED, OR REMOVED BY THE COUNTY OF LOS ANGELES DEPARTMENT OF PUBLIC WORKS AT THE DEVELOPERS EXPENSE CALL (626) 458-1708 10 DAYS PRIOR FOR COORDINATION.
11. SEE TRAFFIC SIGNAL PLAN FOR LOCATION OF CROSSWALKS AT SIGNALIZED INTERSECTIONS.
12. FOR QUESTIONS RELATED TO THIS PLAN, CONSTRUCTION INSPECTORS SHOULD CONTACT KENT TSUJII AT 626-300-4778.

**CONSTRUCTION NOTES:**

- 1 INSTALL DETAIL 9.
- 7 INSTALL DETAIL 38.
- 9 INSTALL DETAIL 39.
- 10 INSTALL DETAIL 39A.
- 11 INSTALL DETAIL 40.
- 12 INSTALL 12" WHITE LIMIT LINE.
- 13 INSTALL 12" WHITE CROSSWALK.
- 14 INSTALL PAVEMENT MARKINGS AS SHOWN.
- 15 INSTALL DETAIL 28.
- 18 INSTALL 12" WHITE CHEVRONS AT 50' SPACING.
- 22 INSTALL 6" WHITE DIAGONAL LINES AT 20' SPACING.

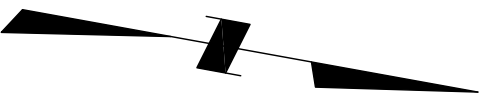
**SIGN LEGEND:**

\* - INDICATES SIGN(S) MOUNTED ON TRAFFIC SIGNAL POLE.  
 \*\* - INDICATES SIGN(S) MOUNTED ON TRAFFIC SIGNAL MAST ARM.

REVISIONS	BY	DATE	CAD FILE NAME	PROJECT	#

		<p>PREPARED BY: <b>ADVANTEC Consulting Engineers</b>                  Traffic + ITS + Communications + Civil + Electrical                  21700 Copley Drive, Suite 350, Diamond Bar, CA 91765                  Tel: (909) 860-6222, Fax: (909) 860-6722, www.advantec-usa.com</p>
		<p>REVIEWED: COUNTY OF LOS ANGELES                  BY: _____ DATE _____                  RECOMMENDED: COUNTY OF LOS ANGELES                  BY: _____ DATE _____                  APPROVED: GAIL FABBER, DIRECTOR OF PUBLIC WORKS                  BY: _____ DATE _____                  ASSISTANT DEPUTY DIRECTOR</p>
COUNTY OF LOS ANGELES DEPARTMENT OF PUBLIC WORKS TRAFFIC AND LIGHTING DIVISION		SIGNING AND STRIPING PLAN MAGIC MOUNTAIN PARKWAY "A" STREET TO THE OLD ROAD
THIS PLAN EXPIRES TWO YEARS AFTER APPROVAL DATE		TR81106-01B   SH1 2 OF 4   SCALE: 1"= 40'   GD 3835

T.G. 4549-H3



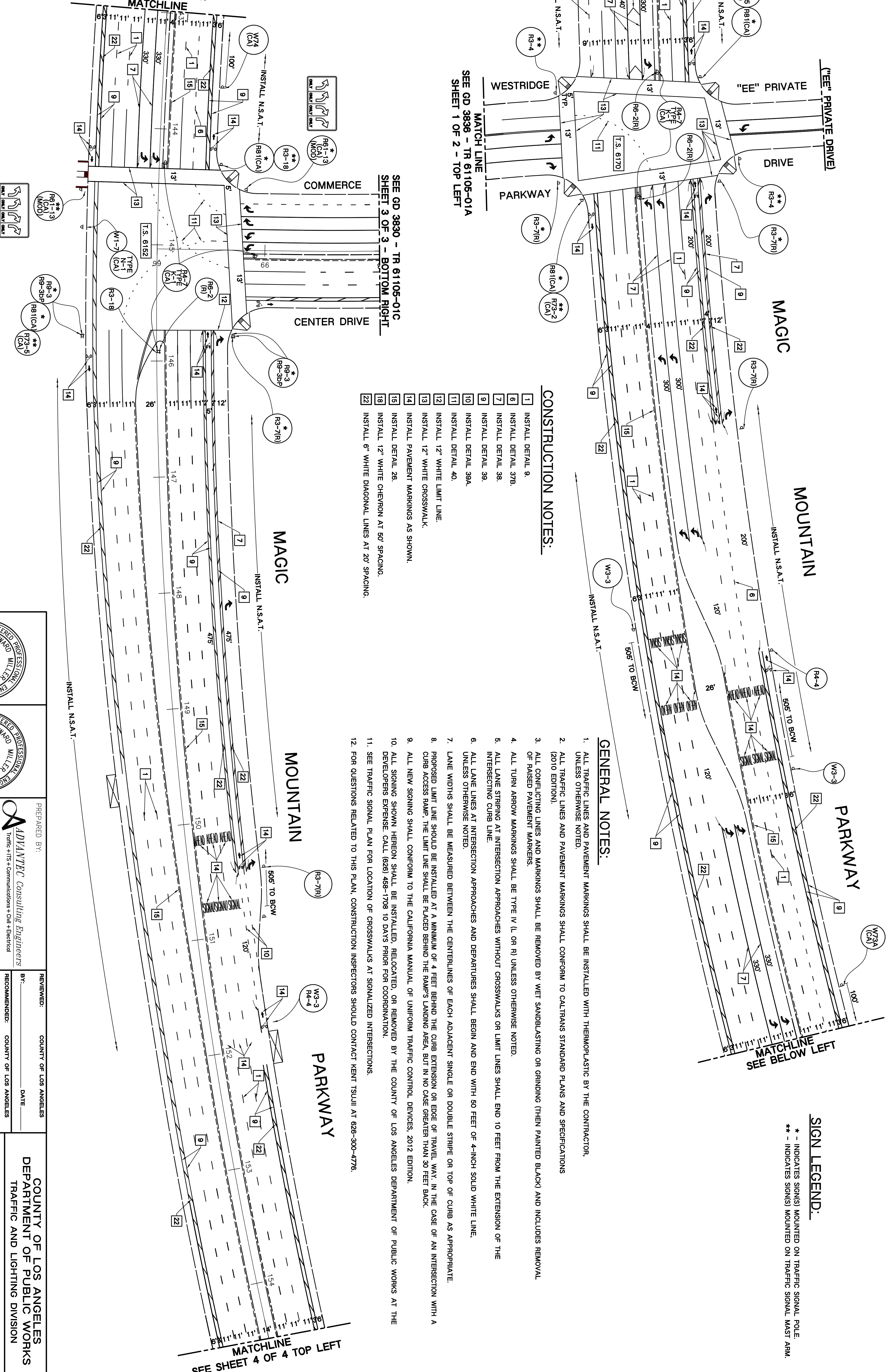
SEE GD 3835 - TR 61105-01B  
SHEET 2 OF 4 - BOTTOM RIGHT

SEE GD 3836 - TR 61105-01A  
SHEET 1 OF 2 - TOP LEFT

SEE ABOVE RIGHT  
MATCHLINE

SEE SHEET 4 OF 4 TOP LEFT

SEE GD 3830 - TR 61105-01C  
SHEET 3 OF 3 - BOTTOM RIGHT



**CONSTRUCTION NOTES:**

1. INSTALL DETAIL 9.
6. INSTALL DETAIL 37B.
7. INSTALL DETAIL 38.
9. INSTALL DETAIL 39.
11. INSTALL DETAIL 39A.
12. INSTALL DETAIL 40.
13. INSTALL 12" WHITE LIMIT LINE.
14. INSTALL 12" WHITE CROSSWALK.
15. INSTALL DETAIL 26.
18. INSTALL 12" WHITE CHEVRON AT 50' SPACING.
22. INSTALL 6" WHITE DIAGONAL LINES AT 20' SPACING.

**GENERAL NOTES:**

1. ALL TRAFFIC LINES AND PAVEMENT MARKINGS SHALL BE INSTALLED WITH THERMOPLASTIC BY THE CONTRACTOR, UNLESS OTHERWISE NOTED.
2. ALL TRAFFIC LINES AND PAVEMENT MARKINGS SHALL CONFORM TO CALTRANS STANDARD PLANS AND SPECIFICATIONS (2010 EDITION).
3. ALL CONFLICTING LINES AND MARKINGS SHALL BE REMOVED BY WET SANDBLASTING OR GRINDING (THEN PAINTED BLACK) AND INCLUDES REMOVAL OF RAISED PAVEMENT MARKERS.
4. ALL TURN ARROW MARKINGS SHALL BE TYPE 'V' (L OR R) UNLESS OTHERWISE NOTED.
5. ALL LANE STRIPING AT INTERSECTION APPROACHES WITHOUT CROSSWALKS OR LIMIT LINES SHALL END 10 FEET FROM THE EXTENSION OF THE INTERSECTING CURB LINE.
6. ALL LANE LINES AT INTERSECTION APPROACHES AND DEPARTURES SHALL BEGIN AND END WITH 50 FEET OF 4-INCH SOLID WHITE LINE, UNLESS OTHERWISE NOTED.
7. LANE WIDTHS SHALL BE MEASURED BETWEEN THE CENTERLINES OF EACH ADJACENT SINGLE OR DOUBLE STRIPE OR TOP OF CURB AS APPROPRIATE.
8. PROPOSED LIMIT LINE SHOULD BE INSTALLED AT A MINIMUM OF 4 FEET BEHIND THE CURB EXTENSION OR EDGE OF TRAVEL WAY. IN THE CASE OF AN INTERSECTION WITH A CURB ACCESS RAMP, THE LIMIT LINE SHALL BE PLACED BEHIND THE RAMP'S LANDING AREA, BUT IN NO CASE GREATER THAN 30 FEET BACK.
9. ALL NEW SIGNING SHALL CONFORM TO THE CALIFORNIA MANUAL OF UNIFORM TRAFFIC CONTROL DEVICES, 2012 EDITION.
10. ALL SIGNING SHOWN HEREON SHALL BE INSTALLED, RELOCATED, OR REMOVED BY THE COUNTY OF LOS ANGELES DEPARTMENT OF PUBLIC WORKS AT THE DEVELOPER'S EXPENSE. CALL (626) 458-1708 10 DAYS PRIOR FOR COORDINATION.
11. SEE TRAFFIC SIGNAL PLAN FOR LOCATION OF CROSSWALKS AT SIGNALIZED INTERSECTIONS.
12. FOR QUESTIONS RELATED TO THIS PLAN, CONSTRUCTION INSPECTORS SHOULD CONTACT KENT TSUJII AT 626-300-4776.

**SIGN LEGEND:**

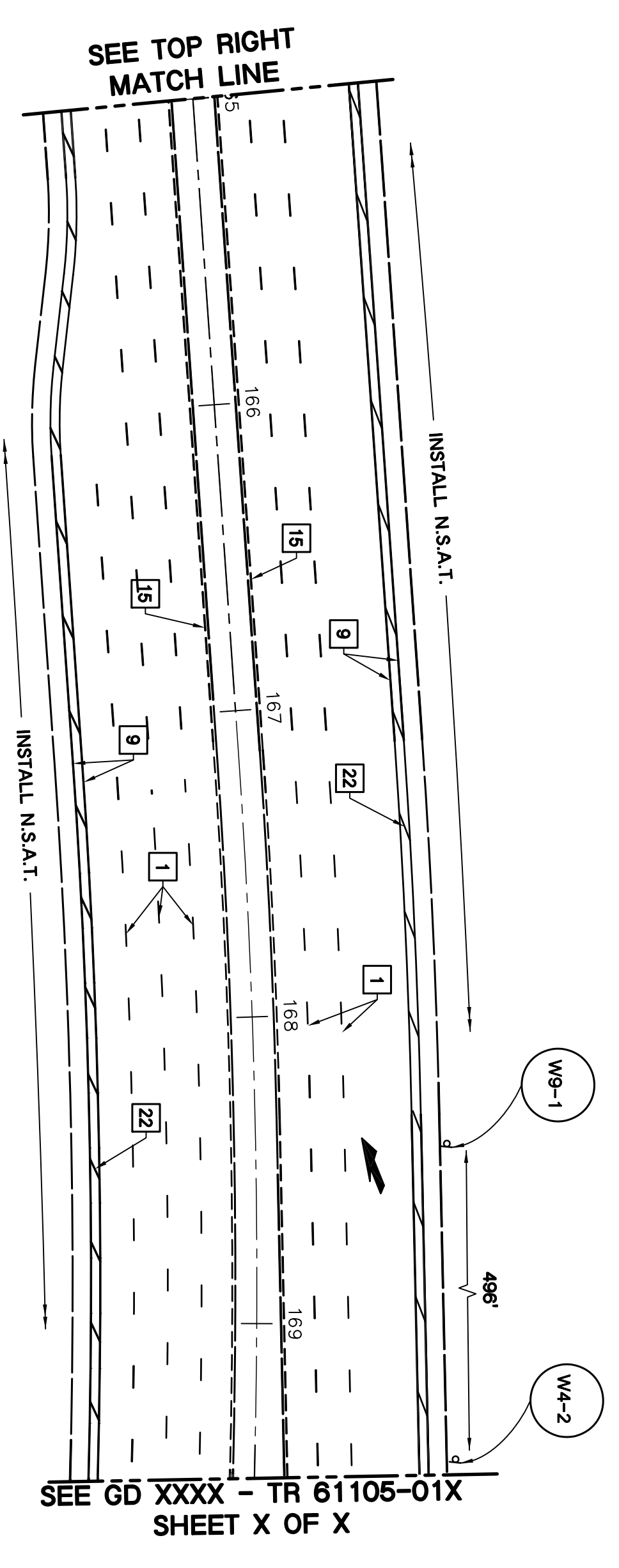
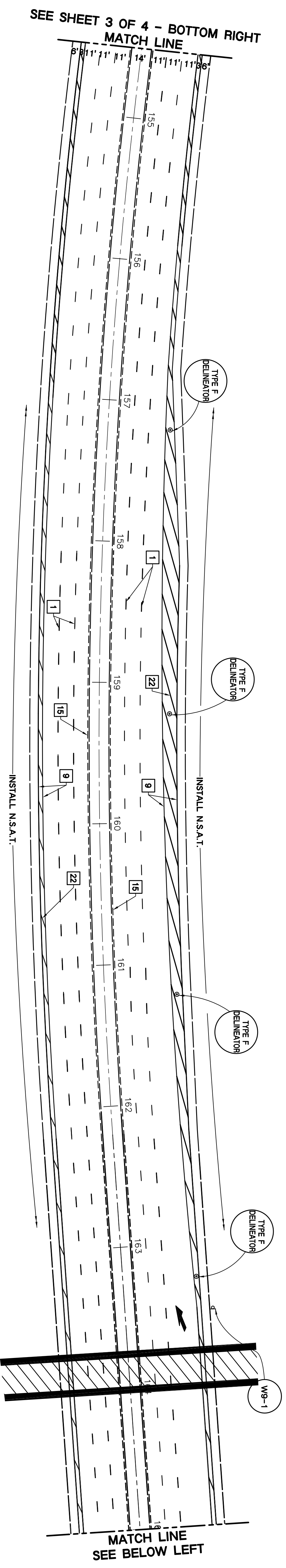
\* - INDICATES SIGN(S) MOUNTED ON TRAFFIC SIGNAL POLE.  
\*\* - INDICATES SIGN(S) MOUNTED ON TRAFFIC SIGNAL MAST ARM.

REVISIONS	BY	DATE	CAD FILE NAME	PROJECT

DESIGNED BY	KT, GE
DRAWN BY	LT
CHECKED BY	TM
APPROVED BY	TM

T.G. 4549-J3

		PREPARED BY: ADVANTAGE Consulting Engineers, Inc. Traffic & ITS + Communications + Civil + Electrical 21700 Copley Drive, Suite 350, Diamond Bar, CA 91765 Tel: (909) 860-6222 Fax: (909) 860-6722 www.advantedge.com	COUNTY OF LOS ANGELES RECOMMENDED BY: DATE: COUNTY OF LOS ANGELES APPROVED BY: GAIL FABBER, DIRECTOR OF PUBLIC WORKS DATE: ASSISTANT DEPUTY DIRECTOR	COUNTY OF LOS ANGELES DEPARTMENT OF PUBLIC WORKS TRAFFIC AND LIGHTING DIVISION SIGNING AND STRIPING PLAN MAGIC MOUNTAIN PARKWAY "A" STREET TO THE OLD ROAD TR61105-01A   SH1 3 OF 4   SCALE: 1" = 40' GD 3835
		DATE: 02/27/16 THIS PLAN EXPIRES TWO YEARS AFTER APPROVAL DATE		



**GENERAL NOTES:**

1. ALL TRAFFIC LINES AND PAVEMENT MARKINGS SHALL BE INSTALLED WITH THERMOPLASTIC BY THE CONTRACTOR, UNLESS OTHERWISE NOTED.
2. ALL TRAFFIC LINES AND PAVEMENT MARKINGS SHALL CONFORM TO CALTRANS STANDARD PLANS AND SPECIFICATIONS (2010 EDITION).
3. ALL CONFLICTING LINES AND MARKINGS SHALL BE REMOVED BY WET SANDBLASTING OR GRINDING (THEN PAINTED BLACK) AND INCLUDES REMOVAL OF RAISED PAVEMENT MARKERS.
4. ALL TURN ARROW MARKINGS SHALL BE TYPE IV (L OR R) UNLESS OTHERWISE NOTED.
5. ALL LANE STRIPING AT INTERSECTION APPROACHES WITHOUT CROSSWALKS OR LIMIT LINES SHALL END 10 FEET FROM THE EXTENSION OF THE INTERSECTING CURB LINE.
6. ALL LANE LINES AT INTERSECTION APPROACHES AND DEPARTURES SHALL BEGIN AND END WITH 90 FEET OF 4-INCH SOLID WHITE LINE, UNLESS OTHERWISE NOTED.
7. LANE WIDTHS SHALL BE MEASURED BETWEEN THE CENTERLINES OF EACH ADJACENT SINGLE OR DOUBLE STRIPE OR TOP OF CURB AS APPROPRIATE.
8. PROPOSED LIMIT LINE SHOULD BE INSTALLED AT A MINIMUM OF 4 FEET BEHIND THE CURB EXTENSION OR EDGE OF TRAVEL WAY IN THE CASE OF AN INTERSECTION WITH A CURB ACCESS RAMP; THE LIMIT LINE SHALL BE PLACED BEHIND THE RAMP'S LANDING AREA, BUT IN NO CASE GREATER THAN 30 FEET BACK.
9. ALL NEW SIGNING SHALL CONFORM TO THE CALIFORNIA MANUAL OF UNIFORM TRAFFIC CONTROL DEVICES, 2012 EDITION.
10. ALL SIGNING SHOWN HEREON SHALL BE INSTALLED, RELOCATED, OR REMOVED BY THE COUNTY OF LOS ANGELES DEPARTMENT OF PUBLIC WORKS AT THE DEVELOPER'S EXPENSE. CALL (626) 469-1708 10 DAYS PRIOR FOR COORDINATION.
11. SEE TRAFFIC SIGNAL PLAN FOR LOCATION OF CROSSWALKS AT SIGNALIZED INTERSECTIONS.
12. FOR QUESTIONS RELATED TO THIS PLAN, CONSTRUCTION INSPECTORS SHOULD CONTACT KENT TSUJII AT 626-300-4776.

**CONSTRUCTION NOTES:**

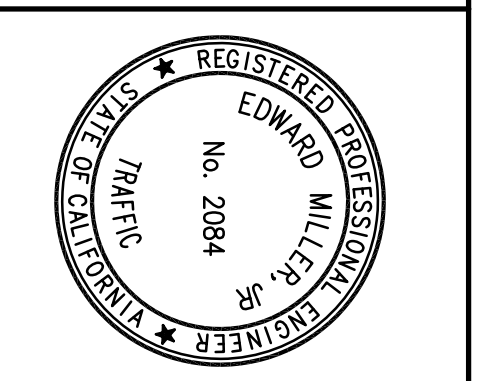
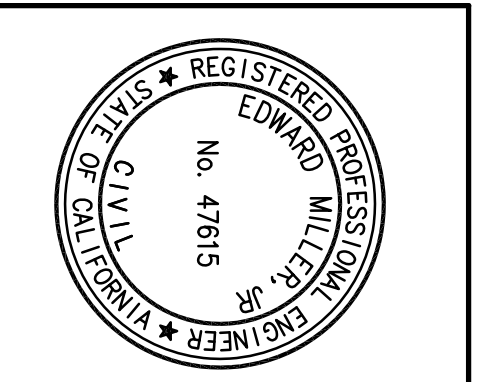
- 1 INSTALL DETAIL 9.
- 9 INSTALL DETAIL 39.
- 15 INSTALL DETAIL 26.
- 22 INSTALL 6" WHITE DIAGONAL LINES AT 20' SPACING.

**SIGN LEGEND:**

- \* - INDICATES SIGN(S) MOUNTED ON TRAFFIC SIGNAL POLE.
- \*\* - INDICATES SIGN(S) MOUNTED ON TRAFFIC SIGNAL MAST ARM.

#	PROJECT	CAD FILE NAME	DATE	BY	REVISIONS

DESIGN	KT, GE
DRAWN	LT
CHECKED BY	TM
REVIEWED BY	TM



PREPARED BY: **ADVANTEC Consulting Engineers**  
 Traffic + ITS + Communications + Civil + Electrical  
 21700 Coleley Drive,  
 Suite 350  
 Diamond Bar, CA 91765  
 Tel: (909) 860-6222  
 Fax: (909) 860-6722  
 www.advantec-usa.com

REVIEWED: COUNTY OF LOS ANGELES  
 BY: \_\_\_\_\_ DATE \_\_\_\_\_  
 RECOMMENDED: COUNTY OF LOS ANGELES  
 BY: \_\_\_\_\_ DATE \_\_\_\_\_  
 APPROVED: GAIL FARNER, DIRECTOR OF PUBLIC WORKS  
 BY: \_\_\_\_\_ DATE \_\_\_\_\_  
 ASSISTANT DEPUTY DIRECTOR

COUNTY OF LOS ANGELES  
 DEPARTMENT OF PUBLIC WORKS  
 TRAFFIC AND LIGHTING DIVISION  
 SIGNING AND STRIPING PLAN  
 MAGIC MOUNTAIN PARKWAY  
 "A" STREET TO THE OLD ROAD  
 TR81105-01A | SH1 4 OF 4 | SCALE: 1"= 40' | CD 3835

T.G. 4549-J3

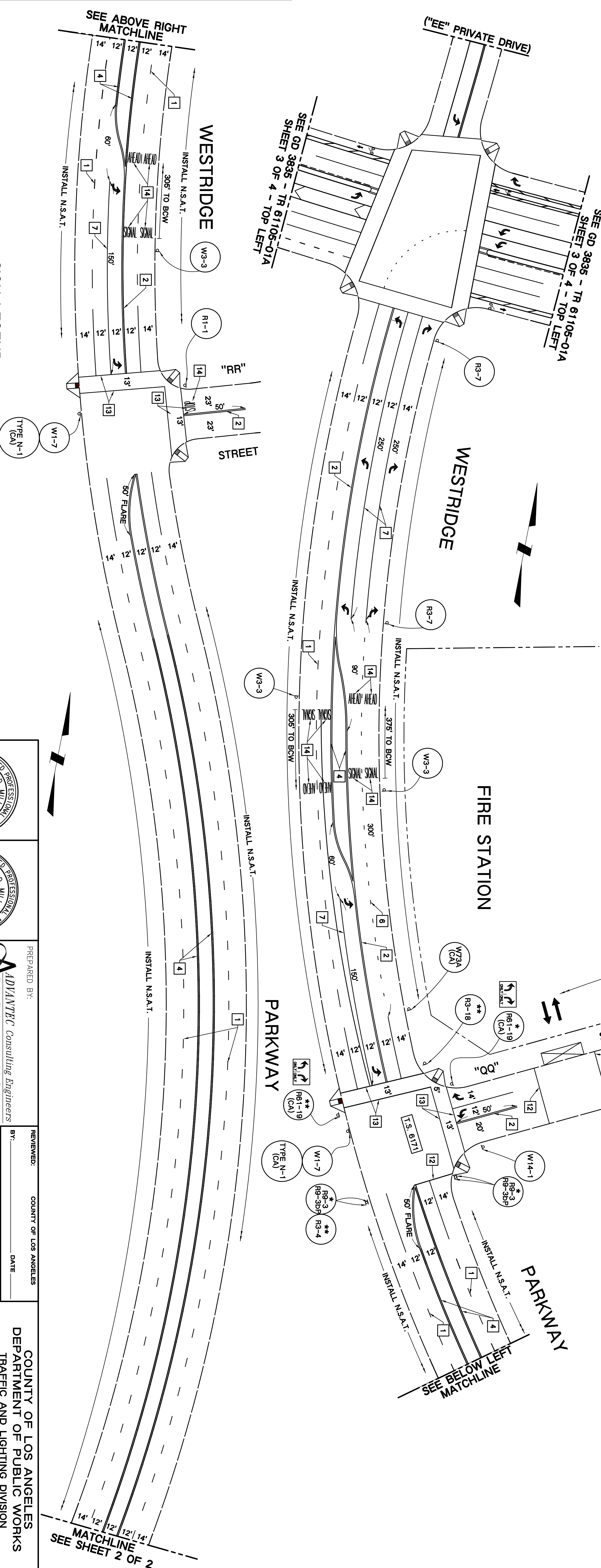
THIS PLAN EXPIRES TWO YEARS AFTER APPROVAL DATE

**GENERAL NOTES:**

1. ALL TRAFFIC LINES AND PAVEMENT MARKINGS SHALL BE INSTALLED WITH THERMOPLASTIC BY THE CONTRACTOR, UNLESS OTHERWISE NOTED.
2. ALL TRAFFIC LINES AND PAVEMENT MARKINGS SHALL CONFORM TO CALTRANS STANDARD PLANS AND SPECIFICATIONS (2010 EDITION).
3. ALL CONFLICTING LINES AND MARKINGS SHALL BE REMOVED BY WET SANDBLASTING OR GRINDING (THEN PAINTED BLACK) AND INCLUDES REMOVAL OF RAISED PAVEMENT MARKERS.
4. ALL TURN ARROW MARKINGS SHALL BE TYPE IV (L OR R) UNLESS OTHERWISE NOTED.
5. ALL LANE STRIPING AT INTERSECTION APPROACHES WITHOUT CROSSWALKS OR LIMIT LINES SHALL END 10 FEET FROM THE EXTENSION OF THE INTERSECTING CURB LINE.
6. ALL LANE LINES AT INTERSECTION APPROACHES AND DEPARTURES SHALL BEGIN AND END WITH 50 FEET OF 4-INCH SOLID WHITE LINE, UNLESS OTHERWISE NOTED.
7. LANE WIDTHS SHALL BE MEASURED BETWEEN THE CENTERLINES OF EACH ADJACENT SINGLE OR DOUBLE STRIPE OR TOP OF CURB AS APPROPRIATE.
8. PROPOSED LIMIT LINE SHOULD BE INSTALLED AT A MINIMUM OF 4 FEET BEHIND THE CURB EXTENSION OR EDGE OF TRAVEL WAY. IN THE CASE OF AN INTERSECTION WITH A CURB ACCESS RAMP, THE LIMIT LINE SHALL BE PLACED BEHIND THE RAMP'S LANDING AREA, BUT IN NO CASE GREATER THAN 30 FEET BACK.
9. ALL NEW SIGNING SHALL CONFORM TO THE CALIFORNIA MANUAL OF UNIFORM TRAFFIC CONTROL DEVICES, 2012 EDITION.
10. ALL SIGNING SHOWN, HEREON SHALL BE INSTALLED, RELOCATED, OR REMOVED BY THE COUNTY OF LOS ANGELES DEPARTMENT OF PUBLIC WORKS AT THE DEVELOPER'S EXPENSE. CALL (626) 489-1708 10 DAYS PRIOR FOR COORDINATION.
11. SEE TRAFFIC SIGNAL PLAN FOR LOCATION OF CROSSWALKS AT SIGNALIZED INTERSECTIONS.
12. FOR QUESTIONS RELATED TO THIS PLAN, CONSTRUCTION INSPECTORS SHOULD CONTACT KENT TSUJII AT 626-300-4776.

**CONSTRUCTION NOTES:**

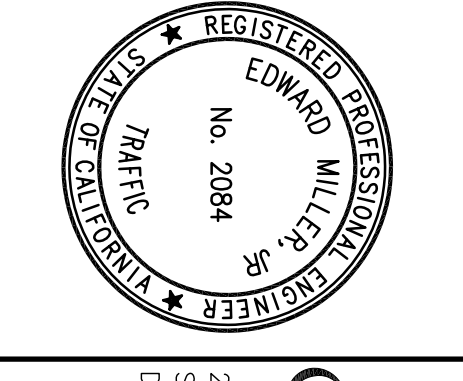
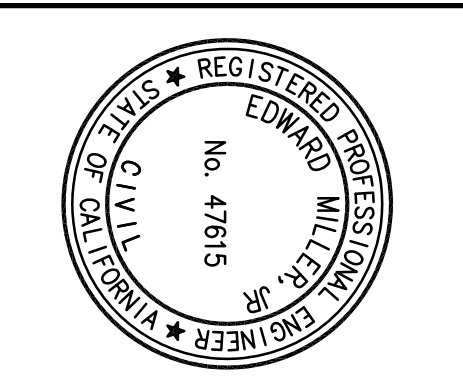
- 1 INSTALL DETAIL 9.
- 2 INSTALL DETAIL 22.
- 3 INSTALL DETAIL 29.
- 4 INSTALL DETAIL 37B.
- 7 INSTALL DETAIL 38.
- 12 INSTALL 12" WHITE LIMIT LINE.
- 13 INSTALL 12" WHITE CROSSWALK.
- 14 INSTALL PAVEMENT MARKINGS AS SHOWN.



**SIGN LEGEND:**

- \* - INDICATES SIGN(S) MOUNTED ON TRAFFIC SIGNAL POLE.
- \*\* - INDICATES SIGN(S) MOUNTED ON TRAFFIC SIGNAL MAST ARM.

#	PROJECT	CAD FILE NAME	DATE	BY	REVISIONS



PREPARED BY:  
**ADVANTEC Consulting Engineers**  
 Traffic + ITS + Communications + Civil + Electrical  
 21700 Copley Drive,  
 Suite 350  
 Diamond Bar, CA 91765  
 Tel: (909) 860-6222  
 Fax: (909) 860-6722  
 www.advantec-usa.com

REVIEWED: COUNTY OF LOS ANGELES  
 BY: \_\_\_\_\_ DATE \_\_\_\_\_  
 RECOMMENDED: COUNTY OF LOS ANGELES  
 BY: \_\_\_\_\_ DATE \_\_\_\_\_  
 APPROVED: GAIL FABBER, DIRECTOR OF PUBLIC WORKS  
 BY: \_\_\_\_\_ DATE \_\_\_\_\_  
 ASSISTANT DEPUTY DIRECTOR

COUNTY OF LOS ANGELES  
 DEPARTMENT OF PUBLIC WORKS  
 TRAFFIC AND LIGHTING DIVISION

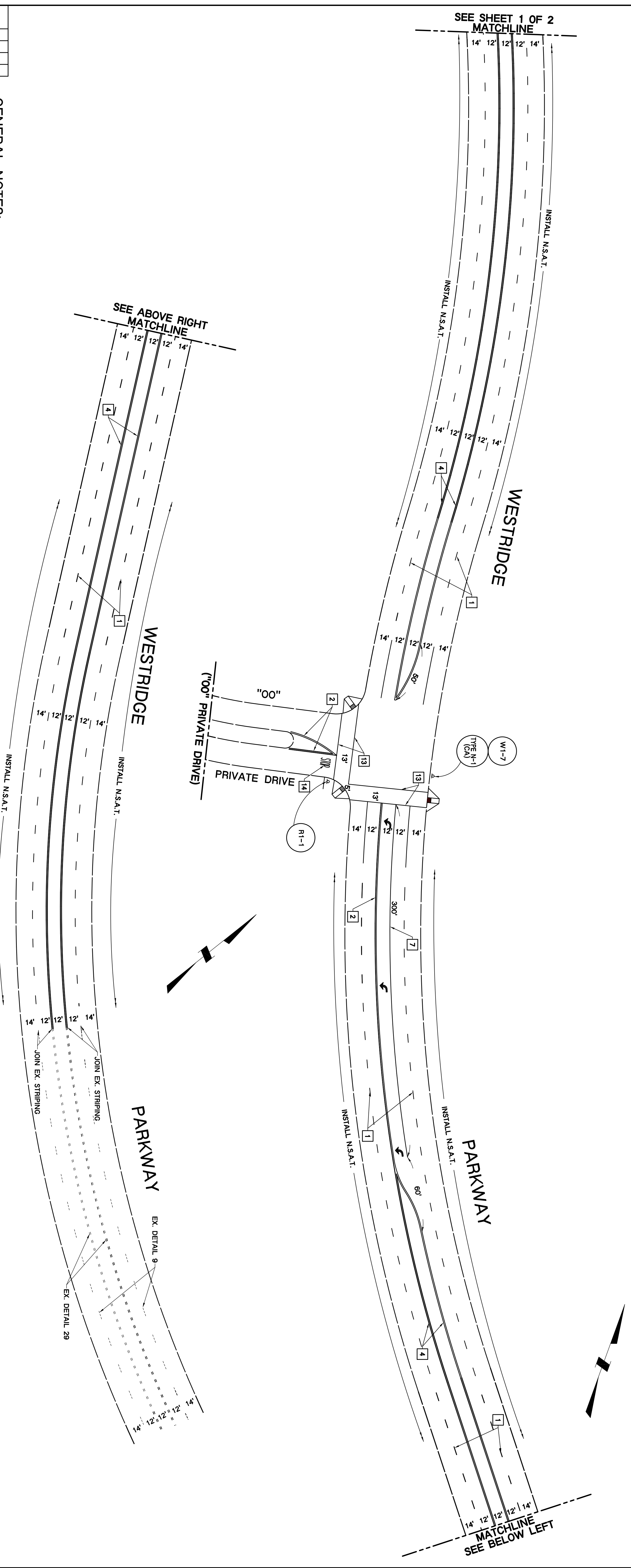
SIGNING AND STRIPING PLAN  
**WESTRIDGE PARKWAY**  
**MAGC MOUNTAIN PARKWAY TO 1280' SO '00' PRIVATE DRIVE**

TR81105-01A | SH1 2 OF 3 | SCALE: 1" = 40'  
 CD 3898

T.G. 4549-J3

THIS PLAN EXPIRES TWO YEARS AFTER APPROVAL DATE





**GENERAL NOTES:**

1. ALL TRAFFIC LINES AND PAVEMENT MARKINGS SHALL BE INSTALLED WITH THERMOPLASTIC BY THE CONTRACTOR, UNLESS OTHERWISE NOTED.
2. ALL TRAFFIC LINES AND PAVEMENT MARKINGS SHALL CONFORM TO CALTRANS STANDARD PLANS AND SPECIFICATIONS (2010 EDITION).
3. ALL CONFLICTING LINES AND MARKINGS SHALL BE REMOVED BY WET SANDBLASTING OR GRINDING (THEN PAINTED BLACK) AND INCLUDES REMOVAL OF RAISED PAVEMENT MARKERS.
4. ALL TURN ARROW MARKINGS SHALL BE TYPE IV (L OR R) UNLESS OTHERWISE NOTED.
5. ALL LANE STRIPING AT INTERSECTION APPROACHES WITHOUT CROSSWALKS OR LIMIT LINES SHALL END 10 FEET FROM THE EXTENSION OF THE INTERSECTING CURB LINE.
6. ALL LANE LINES AT INTERSECTION APPROACHES AND DEPARTURES SHALL BEGIN AND END WITH 50 FEET OF 4-INCH SOLID WHITE LINE, UNLESS OTHERWISE NOTED.
7. LANE WIDTHS SHALL BE MEASURED BETWEEN THE CENTERLINES OF EACH ADJACENT SINGLE OR DOUBLE STRIPE OR TOP OF CURB AS APPROPRIATE.
8. PROPOSED LIMIT LINE SHOULD BE INSTALLED AT A MINIMUM OF 4 FEET BEHIND THE CURB EXTENSION OR EDGE OF TRAVEL WAY. IN THE CASE OF AN INTERSECTION WITH A CURB ACCESS RAMP, THE LIMIT LINE SHALL BE PLACED BEHIND THE RAMP'S LANDING AREA, BUT IN NO CASE GREATER THAN 30 FEET BACK.
9. ALL NEW SIGNING SHALL CONFORM TO THE CALIFORNIA MANUAL OF UNIFORM TRAFFIC CONTROL DEVICES, 2012 EDITION.
10. ALL SIGNING SHOWN HEREON SHALL BE INSTALLED, RELOCATED, OR REMOVED BY THE COUNTY OF LOS ANGELES DEPARTMENT OF PUBLIC WORKS AT THE DEVELOPER'S EXPENSE. CALL (626) 498-1708 10 DAYS PRIOR FOR COORDINATION.
11. SEE TRAFFIC SIGNAL PLAN FOR LOCATION OF CROSSWALKS AT SIGNALIZED INTERSECTIONS.
12. FOR QUESTIONS RELATED TO THIS PLAN, CONSTRUCTION INSPECTORS SHOULD CONTACT KENT TSUJII AT 626-300-4776.

**CONSTRUCTION NOTES:**

- 1 INSTALL DETAIL 9.
- 2 INSTALL DETAIL 22.
- 4 INSTALL DETAIL 29.
- 7 INSTALL DETAIL 38.
- 13 INSTALL 12" WHITE CROSSWALK.
- 14 INSTALL PAVEMENT MARKINGS AS SHOWN.

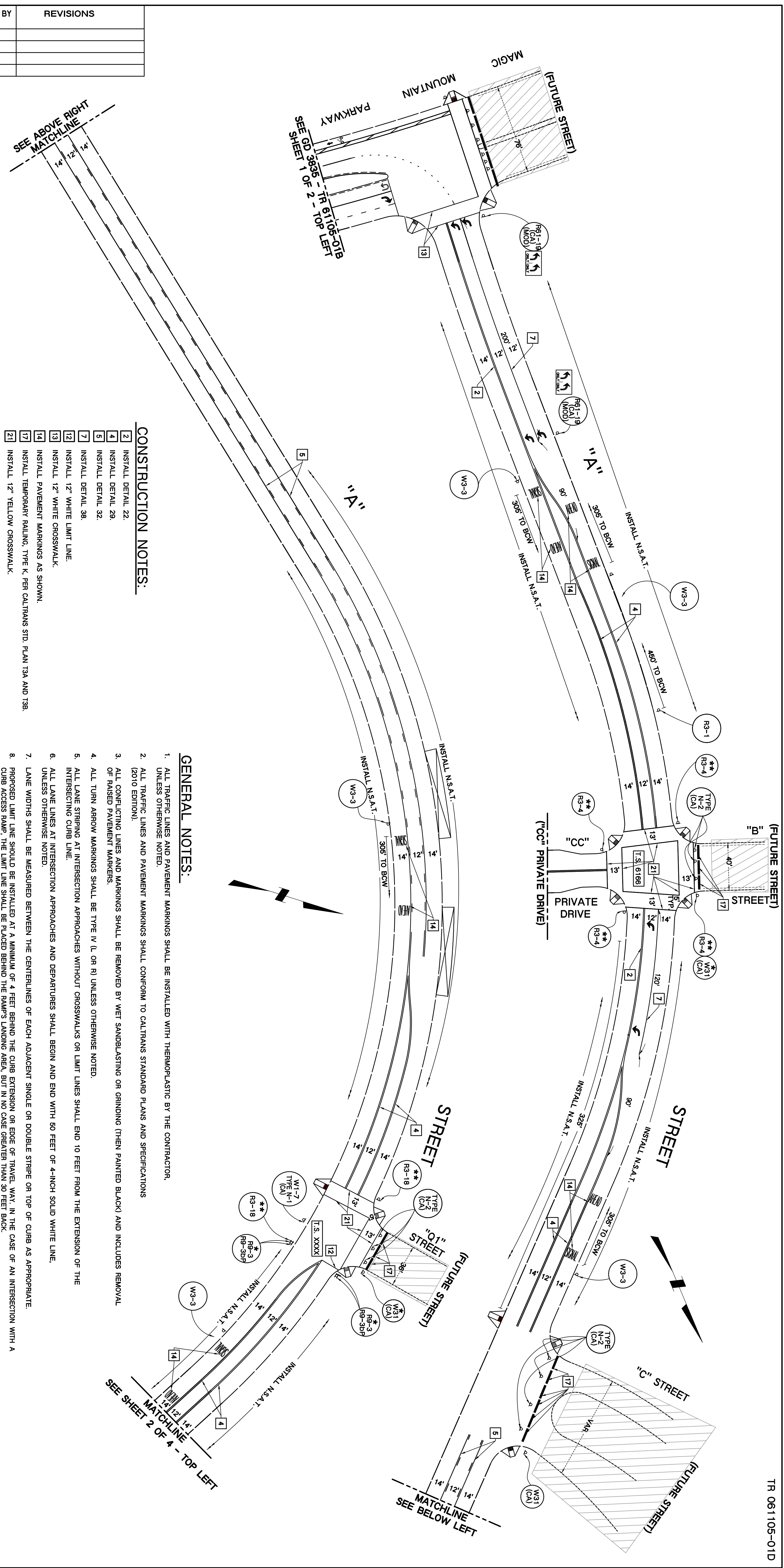
#	PROJECT	CAD FILE NAME	DATE	BY	REVISIONS

DESIGN	KT, GE
PROJECT	LT
APPROVED BY	TM
REVIEWED BY	TM

T.G. 4549-H3

		PREPARED BY: ADVANTEC Consulting Engineers Traffic • ITS • Communications • Civil • Electrical 21700 Coley Drive, Suite 350 Diamond Bar, CA 91765 Tel: (909) 860-6222 Fax: (909) 860-6722 www.advantec-usa.com	REVIEWED: COUNTY OF LOS ANGELES BY: _____ DATE _____ RECOMMENDED: COUNTY OF LOS ANGELES BY: _____ DATE _____ APPROVED: GAIL FABBER, DIRECTOR OF PUBLIC WORKS BY: _____ DATE _____ ASSISTANT DEPUTY DIRECTOR
		DATE: 02/27/16	COUNTY OF LOS ANGELES DEPARTMENT OF PUBLIC WORKS TRAFFIC AND LIGHTING DIVISION SIGNING AND STRIPING PLAN WESTRIDGE PARKWAY MAGC MOUNTAIN PARKWAY TO 1280' SO '00" PRIVATE DRIVE TR81105-01A   SH1 2 OF 2   SCALE: 1"= 40' CD 3838

THIS PLAN EXPIRES TWO YEARS AFTER APPROVAL DATE



- CONSTRUCTION NOTES:**
- 2 INSTALL DETAIL 22.
  - 4 INSTALL DETAIL 29.
  - 5 INSTALL DETAIL 32.
  - 7 INSTALL DETAIL 38.
  - 12 INSTALL 12" WHITE LIMIT LINE.
  - 13 INSTALL 12" WHITE CROSSWALK.
  - 14 INSTALL PAVEMENT MARKINGS AS SHOWN.
  - 17 INSTALL TEMPORARY RAILING, TYPE K, PER CALTRANS STD. PLAN T34 AND T38.
  - 21 INSTALL 12" YELLOW CROSSWALK.

**SIGN LEGEND:**

\* - INDICATES SIGN(S) MOUNTED ON TRAFFIC SIGNAL POLE.  
 \*\* - INDICATES SIGN(S) MOUNTED ON TRAFFIC SIGNAL MAST ARM.

- GENERAL NOTES:**
1. ALL TRAFFIC LINES AND PAVEMENT MARKINGS SHALL BE INSTALLED WITH THERMOPLASTIC BY THE CONTRACTOR, UNLESS OTHERWISE NOTED.
  2. ALL TRAFFIC LINES AND PAVEMENT MARKINGS SHALL CONFORM TO CALTRANS STANDARD PLANS AND SPECIFICATIONS (2010 EDITION).
  3. ALL CONFLICTING LINES AND MARKINGS SHALL BE REMOVED BY WET SANDBLASTING OR GRINDING (THEN PAINTED BLACK) AND INCLUDES REMOVAL OF RAISED PAVEMENT MARKERS.
  4. ALL TURN ARROW MARKINGS SHALL BE TYPE IV (L OR R) UNLESS OTHERWISE NOTED.
  5. ALL LANE STRIPING AT INTERSECTION APPROACHES WITHOUT CROSSWALKS OR LIMIT LINES SHALL END 10 FEET FROM THE EXTENSION OF THE INTERSECTING CURB LINE.
  6. ALL LANE LINES AT INTERSECTION APPROACHES AND DEPARTURES SHALL BEGIN AND END WITH 50 FEET OF 4-INCH SOLID WHITE LINE, UNLESS OTHERWISE NOTED.
  7. LANE WIDTHS SHALL BE MEASURED BETWEEN THE CENTERLINES OF EACH ADJACENT SINGLE OR DOUBLE STRIPE OR TOP OF CURB AS APPROPRIATE.
  8. PROPOSED LIMIT LINE SHOULD BE INSTALLED AT A MINIMUM OF 4 FEET BEHIND THE CURB EXTENSION OR EDGE OF TRAVEL WAY. IN THE CASE OF AN INTERSECTION WITH A CURB ACCESS RAMP, THE LIMIT LINE SHALL BE PLACED BEHIND THE RAMP'S LANDING AREA, BUT IN NO CASE GREATER THAN 30 FEET BACK.
  9. ALL NEW SIGNING SHALL CONFORM TO THE CALIFORNIA MANUAL OF UNIFORM TRAFFIC CONTROL DEVICES, 2012 EDITION.
  10. ALL SIGNING SHOWN HEREON SHALL BE INSTALLED, RELOCATED, OR REMOVED BY THE COUNTY OF LOS ANGELES DEPARTMENT OF PUBLIC WORKS AT THE DEVELOPERS EXPENSE. CALL (626) 458-1708 10 DAYS PRIOR FOR COORDINATION.
  11. SEE TRAFFIC SIGNAL PLAN FOR LOCATION OF CROSSWALKS AT SIGNALIZED INTERSECTIONS.
  12. FOR QUESTIONS RELATED TO THIS PLAN, CONSTRUCTION INSPECTORS SHOULD CONTACT KENT TSUJII AT 626-300-4776.

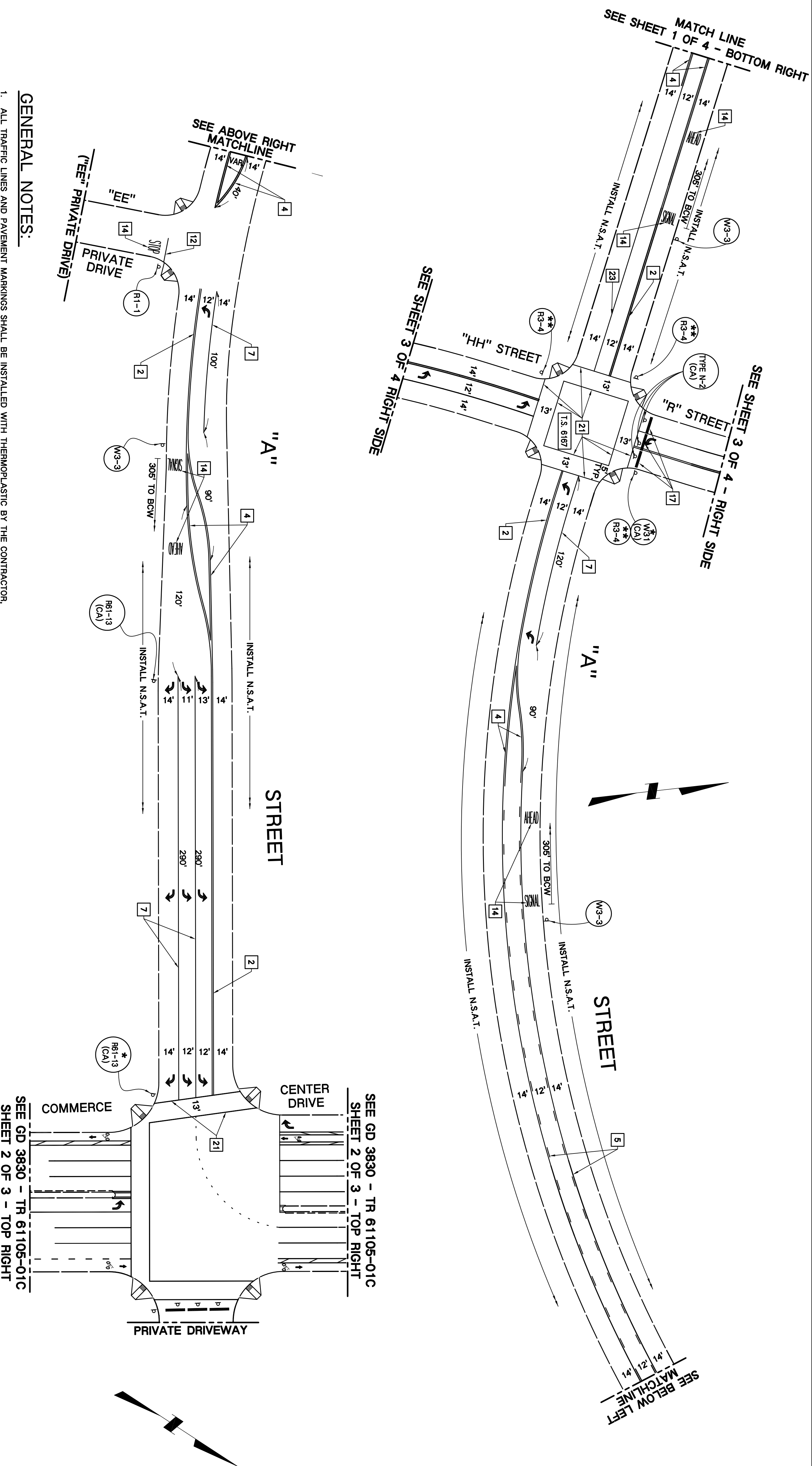
REVISIONS	BY	DATE	CAD FILE NAME	PROJECT	#

DESIGNED BY	KT, GE
CHECKED BY	LT
APPROVED BY	TM
REVIEWED BY	TM

	PREPARED BY: _____ DATE: 02/27/15		REVIEWED: COUNTY OF LOS ANGELES BY: _____ DATE: _____ RECOMMENDED: COUNTY OF LOS ANGELES BY: _____ DATE: _____ APPROVED: GAIL FABBER, DIRECTOR OF PUBLIC WORKS BY: _____ DATE: _____ ASSISTANT DEPUTY DIRECTOR
	ADVANTEC Consulting Engineers Traffic + ITS + Communications + CM + Electrical 21700 Copley Drive, Suite 350 Diamond Bar, CA 91765 Tel: (909) 860-6222 Fax: (909) 860-6722 www.advantec-usa.com		COUNTY OF LOS ANGELES DEPARTMENT OF PUBLIC WORKS TRAFFIC AND LIGHTING DIVISION SIGNING AND STRIPING INTERIM PLAN "A" STREET MAGIC MTN PKWY TO COMMERCE CTR DR. TR81106-01D SH1 1 OF 4 SCALE: 1"=40' GD 3837

T.G. 4549-H2

THIS PLAN EXPIRES TWO YEARS AFTER APPROVAL DATE



**GENERAL NOTES:**

1. ALL TRAFFIC LINES AND PAVEMENT MARKINGS SHALL BE INSTALLED WITH THERMOPLASTIC BY THE CONTRACTOR, UNLESS OTHERWISE NOTED.
2. ALL TRAFFIC LINES AND PAVEMENT MARKINGS SHALL CONFORM TO CALTRANS STANDARD PLANS AND SPECIFICATIONS (2010 EDITION).
3. ALL CONFLICTING LINES AND MARKINGS SHALL BE REMOVED BY WET SANDBLASTING OR GRINDING (THEN PAINTED BLACK) AND INCLUDES REMOVAL OF RAISED PAVEMENT MARKERS.
4. ALL TURN ARROW MARKINGS SHALL BE TYPE IV (L OR R) UNLESS OTHERWISE NOTED.
5. ALL LANE STRIPING AT INTERSECTION APPROACHES WITHOUT CROSSWALKS OR LIMIT LINES SHALL END 10 FEET FROM THE EXTENSION OF THE INTERSECTING CURB LINE.
6. ALL LANE LINES AT INTERSECTION APPROACHES AND DEPARTURES SHALL BEGIN AND END WITH 50 FEET OF 4-INCH SOLID WHITE LINE, UNLESS OTHERWISE NOTED.
7. LANE WIDTHS SHALL BE MEASURED BETWEEN THE CENTERLINES OF EACH ADJACENT SINGLE OR DOUBLE STRIPE OR TOP OF CURB AS APPROPRIATE.
8. PROPOSED LIMIT LINE SHOULD BE INSTALLED AT A MINIMUM OF 4 FEET BEHIND THE CURB EXTENSION OR EDGE OF TRAVEL WAY. IN THE CASE OF AN INTERSECTION WITH A CURB ACCESS RAMP, THE LIMIT LINE SHALL BE PLACED BEHIND THE RAMP'S LANDING AREA, BUT IN NO CASE GREATER THAN 30 FEET BACK.
9. ALL NEW SIGNING SHALL CONFORM TO THE CALIFORNIA MANUAL OF UNIFORM TRAFFIC CONTROL DEVICES, 2012 EDITION.
10. ALL SIGNING SHOWN HEREON SHALL BE INSTALLED, RELOCATED, OR REMOVED BY THE COUNTY OF LOS ANGELES DEPARTMENT OF PUBLIC WORKS AT THE DEVELOPER'S EXPENSE. CALL (626) 458-1708 10 DAYS PRIOR FOR COORDINATION.
11. SEE TRAFFIC SIGNAL PLAN FOR LOCATION OF CROSSWALKS AT SIGNALIZED INTERSECTIONS.
12. FOR QUESTIONS RELATED TO THIS PLAN, CONSTRUCTION INSPECTORS SHOULD CONTACT KENT TSUJII AT 626-300-4776.

**CONSTRUCTION NOTES:**

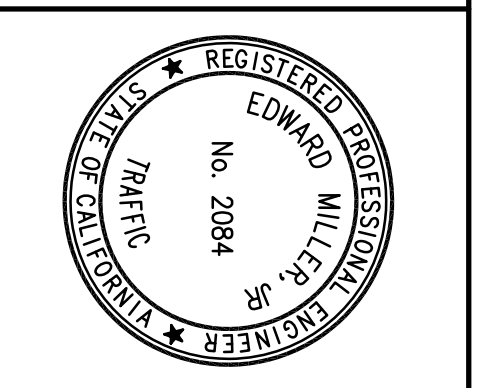
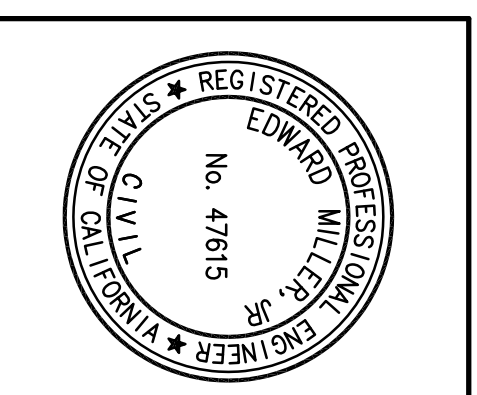
- 2 INSTALL DETAIL 22.
- 4 INSTALL DETAIL 29.
- 5 INSTALL DETAIL 32.
- 7 INSTALL DETAIL 38.
- 12 INSTALL 12" WHITE LIMIT LINE.
- 14 INSTALL PAVEMENT MARKINGS AS SHOWN.
- 17 INSTALL TEMPORARY BAILING, TYPE K, PER CALTRANS STD. PLAN 13A AND 13B.
- 21 INSTALL 12" YELLOW CROSSWALK.
- 23 INSTALL DETAIL 27.

**SIGN LEGEND:**

\* - INDICATES SIGN(S) MOUNTED ON TRAFFIC SIGNAL POLE.  
 \*\* - INDICATES SIGN(S) MOUNTED ON TRAFFIC SIGNAL MAST ARM.

REVISIONS	BY	DATE	CAD FILE NAME	PROJECT

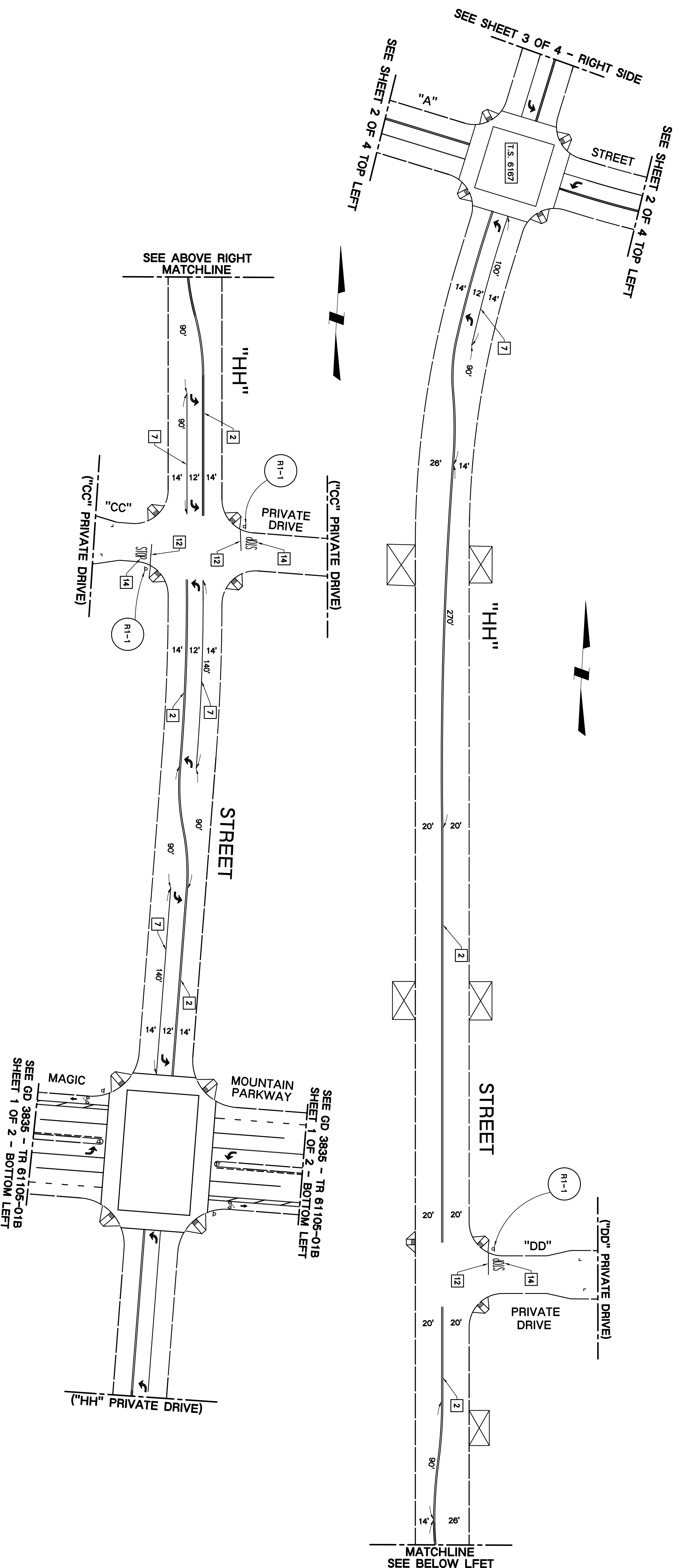
DESIGNED BY	KT, GE
DRAWN BY	LT
CHECKED BY	TM
APPROVED BY	TM
REVIEWED BY	TM



PREPARED BY: ADVANTEC Consulting Engineers  
 21700 Coleley Drive, Suite 350, Diamond Bar, CA 91765  
 Tel: (909) 860-6222, Fax: (909) 860-6722, www.advantec-usa.com

REVIEWED: COUNTY OF LOS ANGELES  
 BY: \_\_\_\_\_ DATE \_\_\_\_\_  
 RECOMMENDED: COUNTY OF LOS ANGELES  
 BY: \_\_\_\_\_ DATE \_\_\_\_\_  
 APPROVED: GAIL FABBER, DIRECTOR OF PUBLIC WORKS  
 BY: \_\_\_\_\_ DATE \_\_\_\_\_  
 ASSISTANT DEPUTY DIRECTOR

COUNTY OF LOS ANGELES  
 DEPARTMENT OF PUBLIC WORKS  
 TRAFFIC AND LIGHTING DIVISION  
 SIGNING AND STRIPING INTERIM PLAN  
 "A" STREET  
 MAGIC MTN PKWY TO COMMERCE CTR DR.  
 TR81105-01D SH1 2 OF 4 SCALE: 1"= 40' GD 3837



**GENERAL NOTES:**

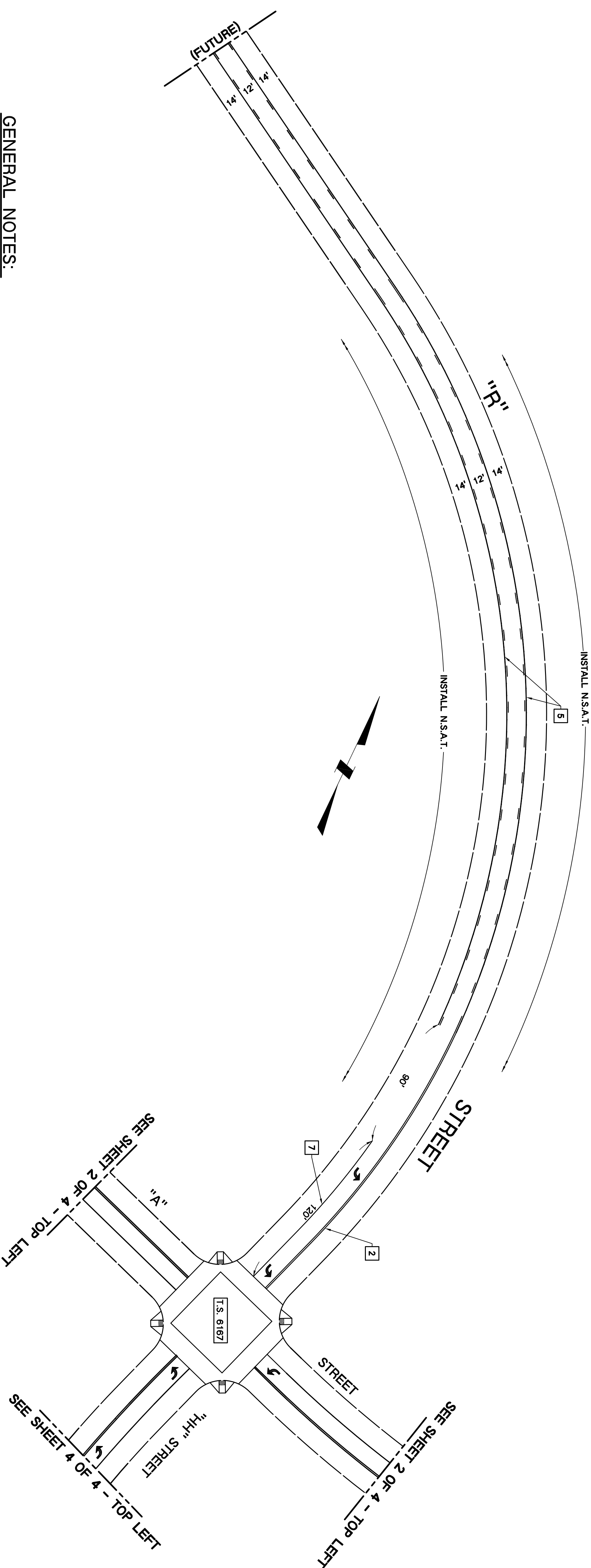
1. ALL TRAFFIC LINES AND PAVEMENT MARKINGS SHOWN SHALL BE INSTALLED WITH THERMOPLASTIC AND SHALL CONFORM TO CALTRANS STANDARD PLANS AND SPECIFICATIONS (LATEST EDITION).
2. ALL CONFLICTING LINES AND MARKINGS SHALL BE REMOVED BY WET SANDBLASTING OR GRINDING (THEN PAINTED BLACK) AND INCLUDES REMOVAL OF RAISED PAVEMENT MARKERS.
3. ALL TURN ARROW MARKINGS SHALL BE TYPE IV (L OR R) UNLESS OTHERWISE NOTED.
4. ALL LANE STRIPING AT INTERSECTION APPROACHES WITHOUT CROSSWALKS OR LIMIT LINES SHALL END 10 FEET FROM THE EXTENSION OF THE INTERSECTING CURB LINE.
5. ALL LANE LINES AT INTERSECTION APPROACHES AND DEPARTURES SHALL BEGIN AND END WITH 50 FEET OF 4-INCH SOLID WHITE LINE.
6. LANE WIDTHS SHALL BE MEASURED BETWEEN THE CENTERLINES OF EACH ADJACENT SINGLE OR DOUBLE STRIPE OR TOP OF CURB AS APPROPRIATE.
7. PROPOSED LIMIT LINE SHOULD BE INSTALLED AT A MINIMUM OF 4 FEET BEHIND THE CURB EXTENSION OR EDGE OF TRAVELED WAY. IN THE CASE OF AN INTERSECTION WITH A CURB ACCESS RAMP, THE LIMIT LINE SHALL BE PLACED BEHIND THE RAMP'S LANDING AREA, BUT IN NO CASE GREATER THAN 30 FEET BACK.
8. ALL NEW SIGNING SHALL CONFORM TO THE CALIFORNIA MANUAL OF UNIFORM TRAFFIC CONTROL DEVICES, 2012 EDITION.
9. ALL SIGNING SHOWN HEREON SHALL BE INSTALLED, RELOCATED, OR REMOVED BY THE COUNTY OF LOS ANGELES DEPARTMENT OF PUBLIC WORKS AT THE DEVELOPERS EXPENSE. CALL (626) 458-1708 5 WORKING DAYS PRIOR FOR COORDINATION.
10. SEE TRAFFIC SIGNAL PLAN FOR LOCATION OF CROSSWALKS AT SIGNALIZED INTERSECTIONS.
11. FOR QUESTIONS RELATED TO THIS PLAN, CONSTRUCTION INSPECTORS SHOULD CONTACT KENT TSUJII AT 626-300-4776.

**CONSTRUCTION NOTES:**

- 2 INSTALL DETAIL 22.
- 7 INSTALL DETAIL 38.
- 12 INSTALL 12" WHITE LIMIT LINE.
- 14 INSTALL PAVEMENT MARKING AS SHOWN.

#	REVISIONS	BY	DATE	CAD FILE NAME	PROJECT

		<p>PREPARED BY:                    ADVANTEC Consulting Engineers                  21700 Coleley Drive,                  Suite 350                  Diamond Bar, CA 91765                  Tel: (909) 860-6222                  Fax: (909) 860-6722                  www.advantec-usa.com</p>	<p>REVIEWED: COUNTY OF LOS ANGELES                  BY: _____ DATE _____                  RECOMMENDED: COUNTY OF LOS ANGELES                  BY: _____ DATE _____                  APPROVED: GAIL FARBBER, DIRECTOR OF PUBLIC WORKS                  BY: _____ DATE _____                  ASSISTANT DEPUTY DIRECTOR</p>
COUNTY OF LOS ANGELES DEPARTMENT OF PUBLIC WORKS TRAFFIC AND LIGHTING DIVISION		SIGNING AND STRIPING PLAN "HH" STREET "A" STREET TO MAGIC MTN PARKWAY	
TR81105-01D   SH1: 4 OF 4   SCALE: 1" = 40'   GD 3837		THIS PLAN EXPIRES TWO YEARS AFTER APPROVAL DATE	



**GENERAL NOTES:**

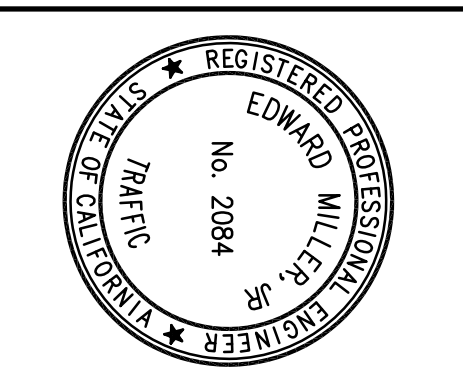
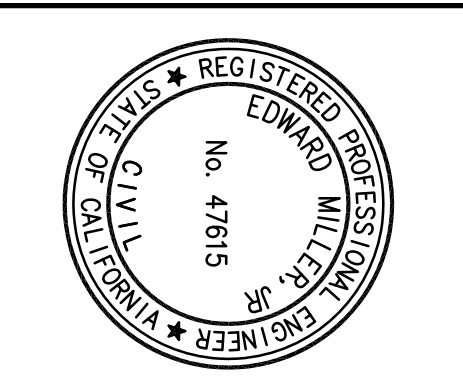
1. ALL TRAFFIC LINES AND PAVEMENT MARKINGS SHALL BE INSTALLED WITH THERMOPLASTIC BY THE CONTRACTOR, UNLESS OTHERWISE NOTED.
2. ALL TRAFFIC LINES AND PAVEMENT MARKINGS SHALL CONFORM TO CALTRANS STANDARD PLANS AND SPECIFICATIONS (2010 EDITION).
3. ALL CONFLICTING LINES AND MARKINGS SHALL BE REMOVED BY WET SANDBLASTING OR GRINDING (THEN PAINTED BLACK) AND INCLUDES REMOVAL OF RAISED PAVEMENT MARKERS.
4. ALL TURN ARROW MARKINGS SHALL BE TYPE IV (L OR R) UNLESS OTHERWISE NOTED.
5. ALL LANE STRIPING AT INTERSECTION APPROACHES WITHOUT CROSSWALKS OR LIMIT LINES SHALL END 10 FEET FROM THE EXTENSION OF THE INTERSECTING CURB LINE.
6. ALL LANE LINES AT INTERSECTION APPROACHES AND DEPARTURES SHALL BEGIN AND END WITH 60 FEET OF 4-INCH SOLID WHITE LINE, UNLESS OTHERWISE NOTED.
7. LANE WIDTHS SHALL BE MEASURED BETWEEN THE CENTERLINES OF EACH ADJACENT SINGLE OR DOUBLE STRIPE OR TOP OF CURB AS APPROPRIATE.
8. PROPOSED LIMIT LINE SHOULD BE INSTALLED AT A MINIMUM OF 4 FEET BEHIND THE CURB EXTENSION OR EDGE OF TRAVEL WAY. IN THE CASE OF AN INTERSECTION WITH A CURB ACCESS RAMP, THE LIMIT LINE SHALL BE PLACED BEHIND THE RAMP'S LANDING AREA, BUT IN NO CASE GREATER THAN 30 FEET BACK.
9. ALL NEW SIGNING SHALL CONFORM TO THE CALIFORNIA MANUAL OF UNIFORM TRAFFIC CONTROL DEVICES, 2012 EDITION.
10. ALL SIGNING SHOWN HEREON SHALL BE INSTALLED, RELOCATED, OR REMOVED BY THE COUNTY OF LOS ANGELES DEPARTMENT OF PUBLIC WORKS AT THE DEVELOPER'S EXPENSE. CALL (626) 466-1708 10 DAYS PRIOR FOR COORDINATION.
11. SEE TRAFFIC SIGNAL PLAN FOR LOCATION OF CROSSWALKS AT SIGNALIZED INTERSECTIONS.
12. FOR QUESTIONS RELATED TO THIS PLAN, CONSTRUCTION INSPECTORS SHOULD CONTACT KENT TSUJII AT 626-300-4776.

**CONSTRUCTION NOTES:**

- 2 INSTALL DETAIL 22.
- 5 INSTALL DETAIL 32.
- 7 INSTALL DETAIL 38.

REVISIONS		BY	DATE	CAD FILE NAME	PROJECT	#

DESIGNED BY	KT, GE
CHECKED BY	LT
APPROVED BY	TM
REVIEWED BY	TM



PREPARED BY:  
**ADVANTEC Consulting Engineers**  
 Traffic + ITS + Communications + Civil + Electrical  
 21700 Coleley Drive,  
 Suite 350  
 Diamond Bar, CA 91765  
 Tel: (909) 860-6222  
 Fax: (909) 860-6722  
 www.advantec-usa.com

REVIEWED: COUNTY OF LOS ANGELES  
 BY: \_\_\_\_\_ DATE \_\_\_\_\_  
 RECOMMENDED: COUNTY OF LOS ANGELES  
 BY: \_\_\_\_\_ DATE \_\_\_\_\_  
 APPROVED: GAIL FABBER, DIRECTOR OF PUBLIC WORKS  
 BY: \_\_\_\_\_ DATE \_\_\_\_\_  
 ASSISTANT DEPUTY DIRECTOR

COUNTY OF LOS ANGELES  
 DEPARTMENT OF PUBLIC WORKS  
 TRAFFIC AND LIGHTING DIVISION

SIGNING AND STRIPING PLAN  
**"R" STREET**  
 900' N/O "A" STREET TO "A" STREET

TR81105-01D | SH1 3 OF 4 | SCALE: 1"= 40' | CD 3837

T.G. 4549-H2

THIS PLAN EXPIRES TWO YEARS AFTER APPROVAL DATE